

accessories Reference Chart

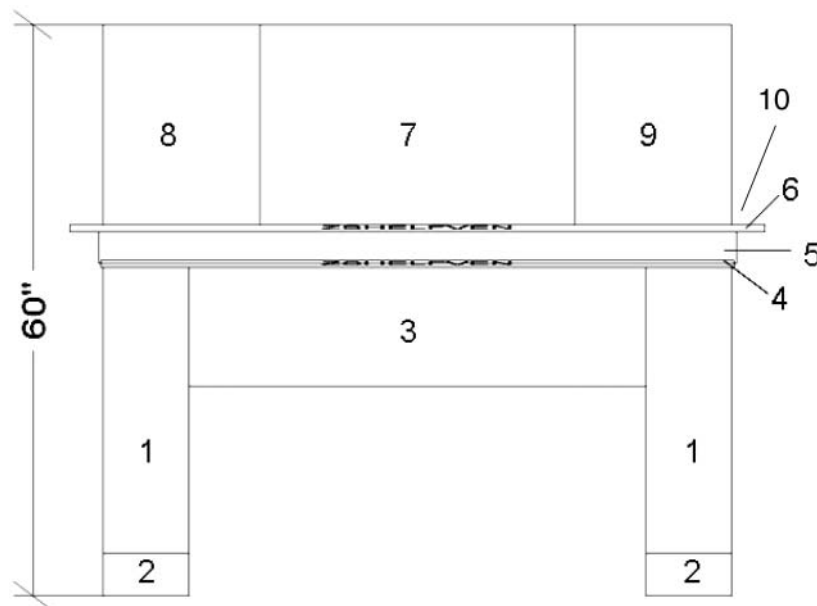
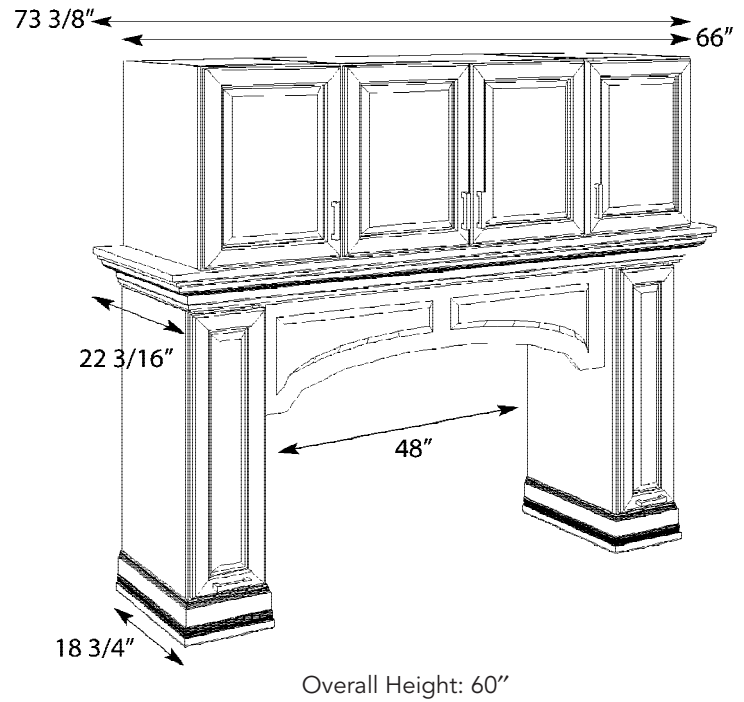
Base Cabinets	Description	3"	6"	9"	12"	15"	18"	19"	21"	24"	27"	30"	33"	36"	42"	45"	48"	Page
2DB__RT	Drawer Base Cabinet (2 Drawers) for Pots and Pans						✓		✓	✓	✓	✓	✓	✓				I•6
2DB36RTPDO	Pegged Dish Organizer													✓				I•6
B__TDRO	Base Cabinet w/ Roll Out Tray Divider				✓	✓												I•20
B__PSB	Base Cabinet w/ Storage Bins					✓	✓											I•21
B__MIX	Base Cabinet w/ Mixer Shelf						✓		✓	✓								I•21
B__SD	Base Cabinet w/ Spice Drawer						✓			✓								I•21
B__PS	Base Pans Storage									✓		✓		✓				I•7
B__RTLO	Base Lid Organizer											✓	✓	✓				I•7
B__WTCD	Base Cabinet with Wood Tiered Cutlery Divider Drawer					✓	✓		✓	✓								I•2
BBCPO_	Base Box Column Pullout	✓	✓															I•21
BBS18	Base Cabinet w/ Bottle Storage						✓											I•22
BCRS__	Blind Corner Base Cabinet w/ Pullout															✓	✓	I•14
BCS__	Base Can Storage			✓	✓	✓												I•21
BPCS36	Base Pantry Can Storage													✓				I•8
BPPP__	Base Pots and Pans Pullout									✓		✓						I•7
BPT__BB	Base Pantry											✓		✓	✓		✓	I•8
BRC27	Base Recycling Cabinet										✓							I•22
BSC30 PR, R, RP, RS, SR	Base Super Cabinet											✓						I•4
BSC36 PRP, PRS, SRP, SRS	Base Super Cabinet													✓				I•5
BSP__	Base Spice Pullout				✓	✓												I•21
BWB__	Base Cabinet w/ Waste Basket					✓	✓		✓	✓								I•22
BWB__FH	Base Waste Basket Full Height						✓		✓									I•22
BWB__BB	Base Waste Basket w/ Bread Board					✓	✓		✓	✓								I•22
SB__S	Sink and Range Base Super Cabinet											✓	✓	✓				I•9
SBDT__S	Sink and Range Base Super Cabinet w/ Drop Tray											✓	✓	✓				I•9
SSS__CR	Super Space Saver with Chrome Rail												✓	✓				I•17
SSS__RSCR	Super Space Saver Reduced Shelf with Chrome Rail												✓	✓				I•16
SSS36CRCD	Super Space Saver with Chrome Rail & Corner Drawer													✓				I•18
3CDB36	Three Corner Drawer													✓				I•18
VBP1234.5	Vanity Base Pullout Cabinet				✓													K•4
Tall Cabinets																		
LCRH1884	Linen Closet with Removable Hamper Cabinet					✓												K•8
TPP__	Tall Pantry Pullouts				✓	✓	✓											J•5
UCS36__	Utility Can Storage													✓				J•6
UOC24__	Utility Organization Cabinet									✓								J•7
2UOC24__	Utility Organization Cabinet									✓								J•7
Wall Cabinets																		
OBS__36	Organizer and Bookshelf									✓		✓		✓				H•28
WBCPO_30	Wall Box Column Pullouts	✓	✓															H•32
WEAS__30	Wall Easy Access Cabinet					✓	✓					✓		✓				H•5
WMC____	Wall Message Center				✓													H•27
WSP____	Wall Spice Pullout Cabinet			✓	✓													H•31
HTP12__	Hearth Tower Pullouts				✓													H•41
WSR21__	Wall Cabinet w/ Swingout Spice Rack								✓									H•31
WWR__30	Wall Cabinet w/ Wine Rack									✓		✓		✓				H•29

Hearth 1

HE01	Parts List
✓	(1) 2-WSP0930, EXBKL & R6", WBRB, FLSHL, FLSHR
✓	(2) 1-BBM8
✓	(3) 1-RPV48*
✓	(4) 1-SHELFVEN 19" x 67", trim front with 2-MCBEAD
✓	(5) 2-ICROWN
✓	(6) 1-SHELFVEN 22" x 73", trim front with 2-MCBEAD
✓	(7) 1-W3321, SP+DP21
✓	(8) 1-W3321, SP+DP21, Half Width 16.5R, FLSHL
✓	(9) 1-W3321, SP+DP21, Half Width 16.5L, FLSHR
✓	(10) 2-MBATTEN

NOTE: Moulding needs to be ordered to match kitchen. Verona will have all arch doors, including WSPs. See appliance specs for clearance requirements. Vent installation behind valance recommended. Use single design code HE01 to locate template in 20/20 catalog. You may edit these designs to accommodate actual dimensions in your projects.

*RPV not available in Hickory.



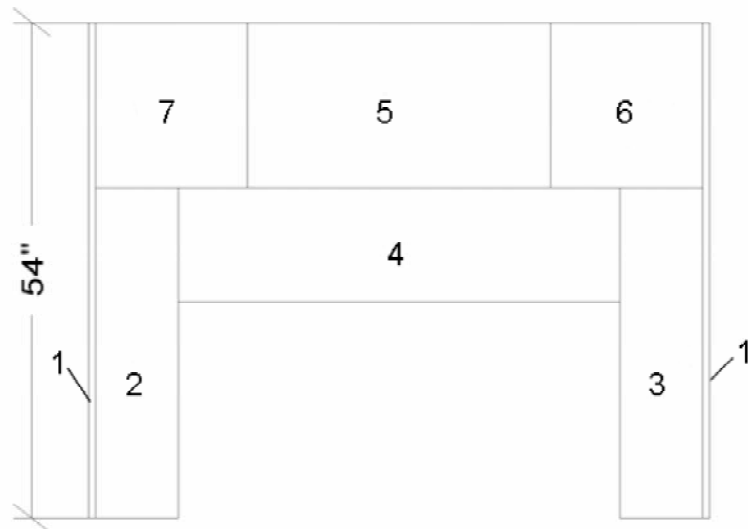
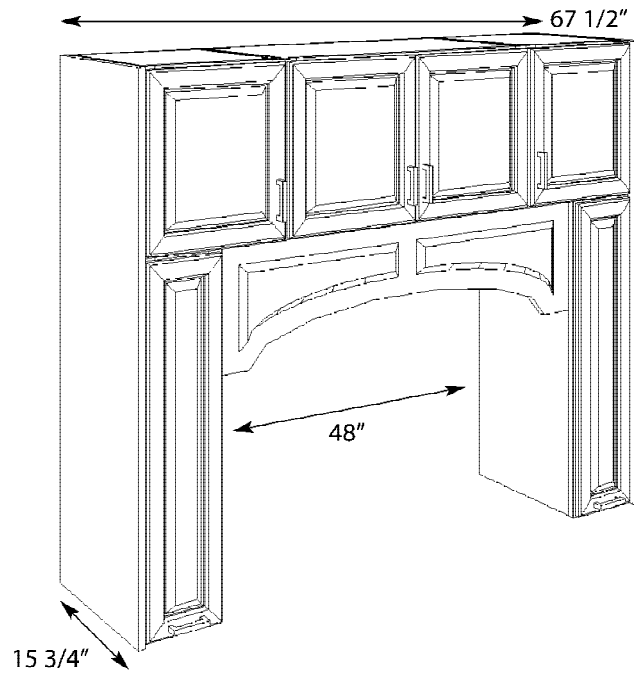
Parts Key
(Aerial View)

Hearth 2

HE02	Parts List
✓	(1) 2-PILB84 w/MTBAT Moulding (trim to 15 3/4" x 60" H)
✓	(2) 1-WSP0936, EXBKR3", FLSHR
✓	(3) 1-WSP0936, EXBKL3", FLSHL
✓	(4) 1-RPV48*
✓	(5) 1-W3318, SP+DP15
✓	(6) 1-W3318, Half Width 16.5"R, SP+DP15
✓	(7) 1-W3318, Half Width 16.5"L, SP+DP15

NOTE: Moulding needs to be ordered to match kitchen. Verona will have all arch doors, including WSPs. See appliance specs for clearance requirements. Use single design code HE02 to locate template in 20/20 catalog. You may edit these designs to accommodate actual dimensions in your projects.

*RPV not available in Hickory.



Parts Key
(Aerial View)

Armoire 1

AR01FO Full Overlay	AR01PO Partial Overlay	Parts List
✓	✓	(1) BCFV330 FLUTE
✓		(2) VB36 – 18" Deep EL $\frac{1}{4}$ ", ER $\frac{1}{4}$ ", WBRB, FI
	✓	(2) VB36 – 18" Deep, WBRB, FI
✓	✓	(3) BCFV330 FLUTE
✓	✓	(4) BCFW360 27" Deep, FLUTE
✓		(5) W3618 SP+DP18", EL $\frac{1}{4}$ ", ER $\frac{1}{4}$ ", FI
	✓	(5) W3618 SP+DP18", FI
✓		(6) W3636 MD36, FI, SP+DP18", EL $\frac{1}{4}$ ", ER $\frac{1}{4}$ "
	✓	(6) W3636 MD36, FI, SP+DP18"
✓		(7) 3/4SOLID $\frac{3}{4}$ " x 6" x 36 $\frac{1}{2}$ "
	✓	(7) FW636
✓	✓	(8) BCFW360 27" Deep, FLUTE
✓		(9) WOODTOP – 1 $\frac{1}{2}$ " x 19 $\frac{1}{2}$ " Deep x 43 $\frac{1}{2}$ " #17 F, L, R
	✓	(9) WOODTOP – 1 $\frac{1}{2}$ " x 19 $\frac{1}{2}$ " Deep x 43" #17 F, L, R
✓	✓	(10) 2-ORNMENTACA
✓	✓	(11) ONLYACA
✓	✓	(12) 2-FU396 WBRB
✓	✓	(13) 2-MTST
✓	✓	(14) 2-MTCROWN
✓	✓	(15) 2-MBS

AR01FO

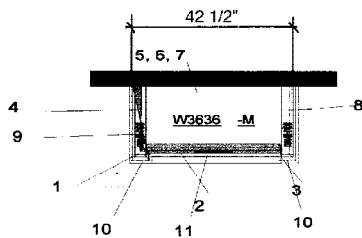
Mount W3636 on top of W3618. Place 3/4SOLID $\frac{3}{4}$ " x 6" x 36 $\frac{1}{2}$ " on top of W3636. Attach ONLYACA to center of filler. Use BCFW360 cut to 19" deep on each side of stacked wall cabinets. Attach ORNMNTACA to tops of columns. Use woodtop as countertop. Attach BCFV330 cut to fit on each side of VB36. Wrap MBS around entire unit. Construct top trim with FU396 WBRB between MTST and MTCROWN.

NOTE: Glass not included. Not available in Braydon Manor, Daladier, Davenport, Hawthorne, Huchenson, Leyden, Modesto, Savannah, Treyburn, Willshire, and Yardley.

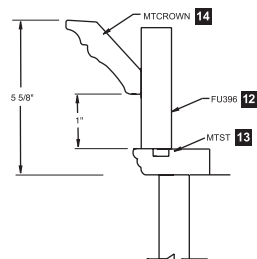
AR01PO

Mount W3636 on top of W3618. Place FW636 on top of W3636. Attach ONLYACA to center of filler. Use BCFW360 cut to 19" deep on each side of stacked wall cabinets. Attach ORNMNTACA to tops of columns. Use woodtop as countertop. Attach BCFV330 cut to fit on each side of VB36. Wrap MBS around entire unit. Construct top trim with FU396 WBRB between MTST and MTCROWN.

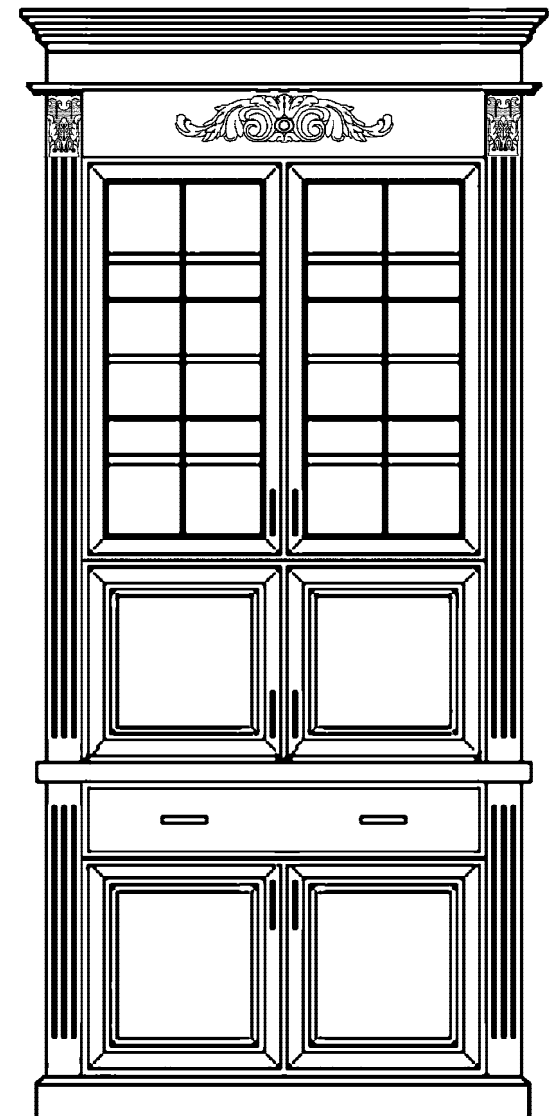
NOTE: Glass not included.



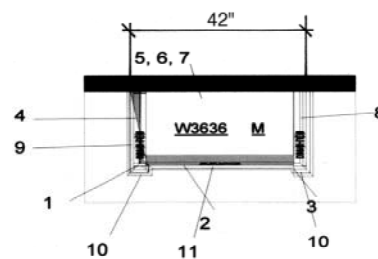
Full Overlay Parts Key
(Aerial View)



Top Trim



Overall Height: 97 $\frac{1}{8}$ "
(including moulding shown)



Partial Overlay Parts Key
(Aerial View)

Armoire 2

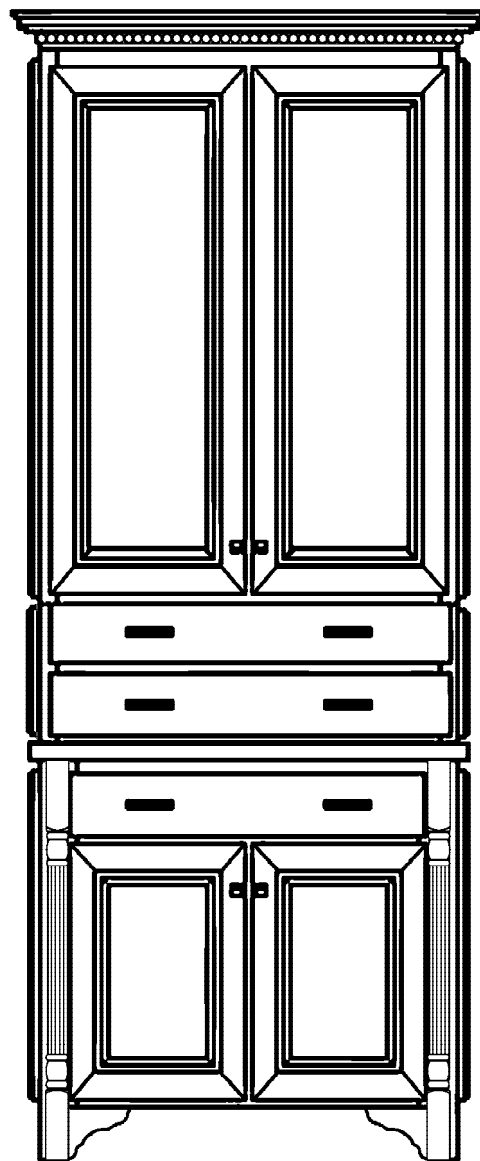
AR02FO Full Overlay	AR02PO Partial Overlay	Parts List
✓		(1) B36RT, 2WSL3, 2WSR3, AUTHL&R, FLSHL, FLSHR, SP-DP21", OBRB, FI
	✓	(1) B36RT, 2WSL1.5, 2WSR1.5, FI, AUTHL&R, FLSHL, FLSHR, SP-DP21", OBRB
✓	✓	(2) W3648 SP+DP21", FLSHL, FLSHR, AUTHL&R, A2DRW, FI
✓	✓	(3) WOODTOP 1½"H x 22¼"D x 38"W #17 F, L, R
✓		(4) 2-SPTRINGEND
	✓	(4) 2-SPOOL36
✓		(5) 2-SPTRINGSPL30
	✓	(5) 1-TK
✓		(6) 1-TK
	✓	(6) 2-CORBEL L&R
✓		(7) 2-CORBEL L&R
	✓	(7) 1-ICROWN
✓		(8) 1-ICROWN
	✓	(8) 1-MCBEAD
✓		(9) 1-MCBEAD
	✓	(9) 1-FU396 WBRB
✓		(10) 1-FU396 WBRB

AR02FO

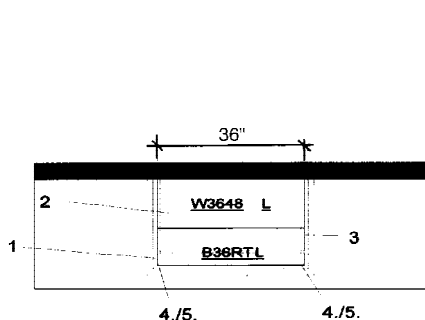
Attach SPTRINGEND and SPTRINGSPL30 to WSL&R3 on base cabinet. Cut to fit. Use wood top as countertop. Construct top trim from ICROWN cleated to FU396 WBRB. Use MBEAD in insert. Place CORBEL L&R next to OBRB in base cabinet.

AR02PO

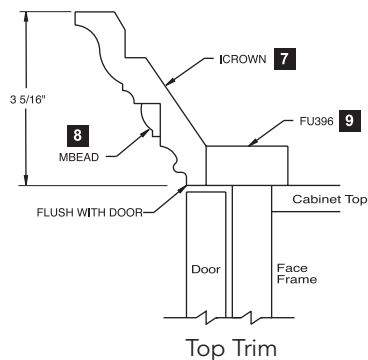
Attach SPOOL36 to WSL&R1.5 on base cabinet. Cut to fit. Use wood top as countertop. Construct top trim from ICROWN cleated to FU396WBRB. Use MBEAD in insert. Place CORBEL L&R next to OBRB in base cabinet.



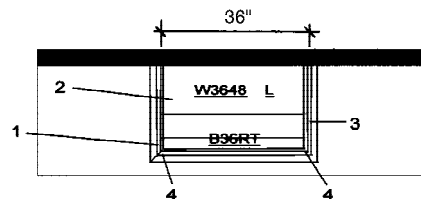
Overall Height: 99⁵/₁₆"
(including moulding shown)



Full Overlay Parts Key
(Aerial View)



Top Trim



Partial Overlay Parts Key
(Aerial View)

Distinctions

Armoire 3

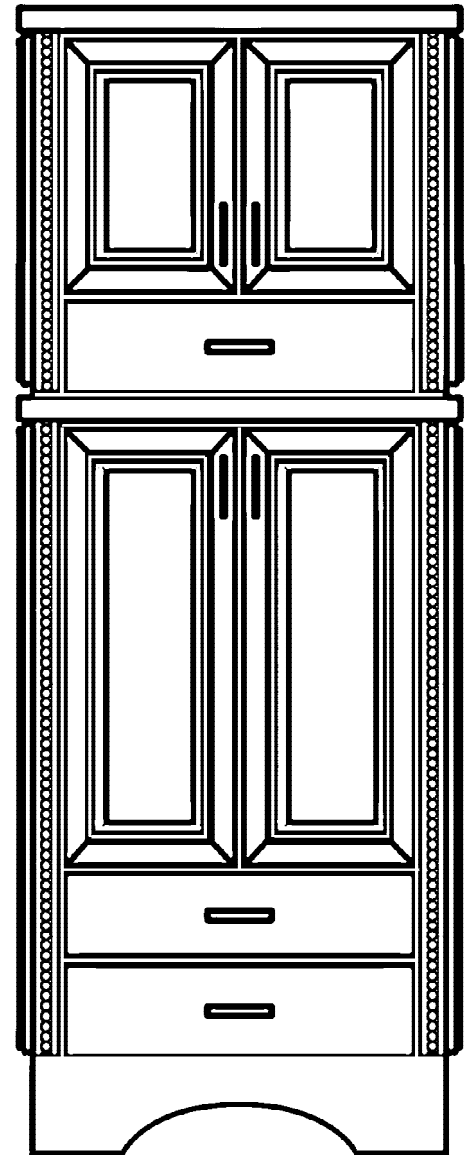
AR03FO Full Overlay	AR03PO Partial Overlay	Parts List
✓	✓	(1) W2730, A2DRW, FLSHL, FLSHR, AUTHL&R, WBRBARCH, 2WSL1.5, 2WSR1.5, SP+DP18", FI
✓	✓	(2) W2718 SP+DP18", ADRW, AUTHL&R, FLSHL, FLSHR, 2WSL1.5, 2WSR1.5, FI
✓	✓	(3) WOODTOP 1 1/2"H x 19 1/4"D x 29"W #17 F, L, R
✓	✓	(4) WOODTOP 1 1/2"H x 19 1/4"D x 29"W #17 F, L, R
✓	✓	(5) 2-MCBEAD

AR03FO

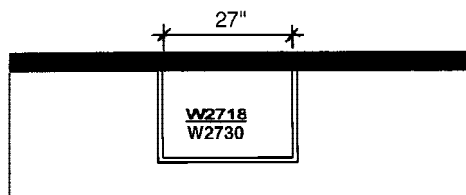
Place 1 - WOODTOP on top of each cabinet. Place upper woodtop finished side down. Attach MCBEAD moulding vertically on exposed face frame of both cabinets.

AR03PO

Place 1 - WOODTOP on top of each cabinet. Place upper woodtop finished side down. Attach MCBEAD moulding vertically on exposed face frame of both cabinets.



Overall Height: 73 1/2"



Parts Key
(Aerial View)

Armoire 4

AR04FO Full Overlay	AR04PO Partial Overlay	Parts List
✓		(1) DBB42 OBRB, EL $\frac{1}{4}$ ", ER $\frac{1}{4}$ "
	✓	(1) DBB42 OBRB
✓		(2) WOODTOP 1 $\frac{1}{2}$ "H x 25 $\frac{1}{4}$ "D x 45"W #17 F, L, R
	✓	(2) WOODTOP 1 $\frac{1}{2}$ "H x 25 $\frac{1}{4}$ "D x 44 $\frac{1}{2}$ "W #17 F, L, R
✓	✓	(3) AD42
✓	✓	(4) AD42
✓		(5) W4236 SP+DP18", FI, 2-PRMD36, EL $\frac{1}{4}$ ", ER $\frac{1}{4}$ "
	✓	(5) W4236 SP+DP18", FI, 2-PRMD36
✓		(6) W4212 SP+DP18", EL $\frac{1}{4}$ ", ER $\frac{1}{4}$ ", FI
	✓	(6) W4212 SP+DP18", FI
✓	✓	(7) PILB34.5, w/MTBE
✓	✓	(8) PILB34.5, w/MTBE
✓	✓	(9) PILB84, w/MTBE
✓	✓	(10) PILB84 w/MTBE
✓	✓	(11) 2-SHKRCROWN
✓	✓	(12) 1-PIL584 w/MTBE
✓		(13) 1-FW3

AR04FO

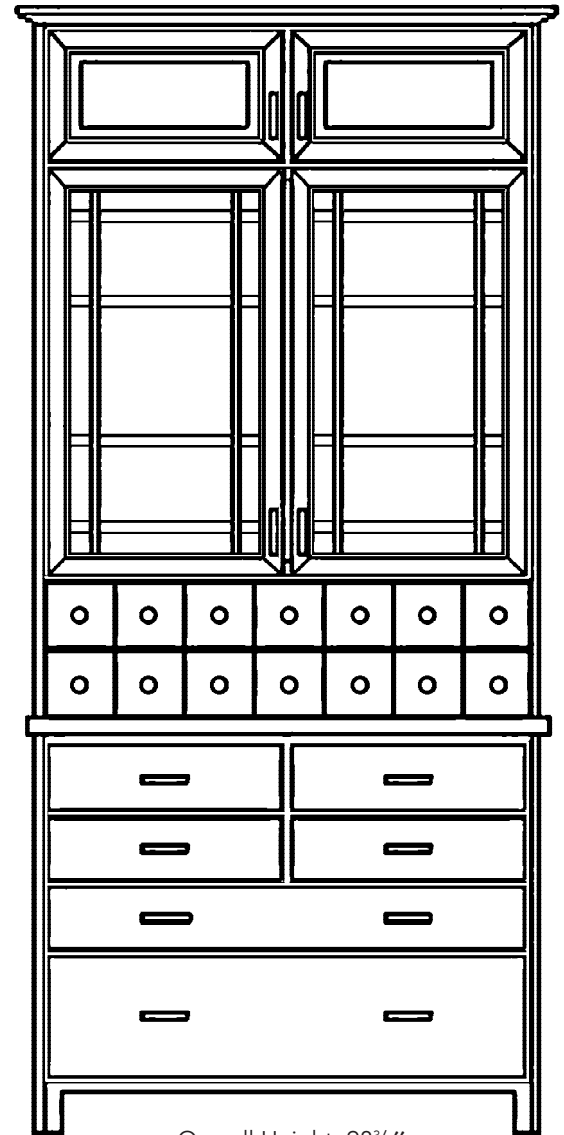
Attach pilasters to sides of all cabinets. Cut to fit. Pull AD42s out 6". Top trim is SHKRCROWN cleated to PIL584 w/MTBE. Trim filler to $\frac{1}{4}$ " and install on each side of AD42s.

NOTE: Glass not included. Not available in Braydon Manor, Daladier, Davenport, Hawthorne, Huchenson, Leyden, Modesto, Savannah, Treyburn, Willshire, and Yardley.

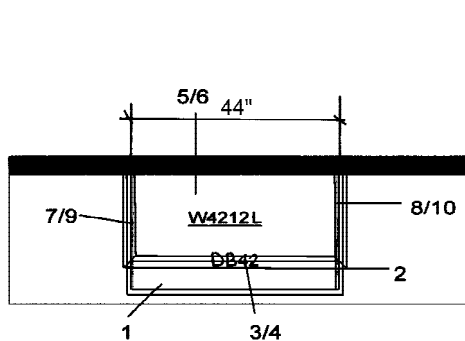
AR04PO

Attach plasters to sides of all cabinets. Cut to fit. Pull AD42s out 6". Top trim is SHKRCROWN cleated to PIL584 w/MTBE.

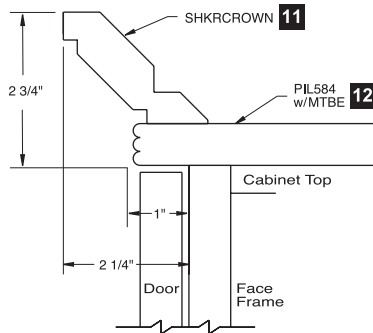
NOTE: Glass not included.



Overall Height: 98 $\frac{3}{4}$ "
(including moulding shown)



Parts Key
(Aerial View)



Top Trim

Armoire 5

AR05FO Full Overlay	AR05PO Partial Overlay	Parts List
✓	✓	(1) BCFB334.5 ROSFLUT
✓		(2) BOB18 EL $\frac{1}{4}$ "
	✓	(2) BOB18
✓		(3) BOB18 ER $\frac{1}{4}$ "
	✓	(3) BOB18
✓	✓	(4) BCFB334.5 ROSFLUT
✓	✓	(5) BCFW360 24"D, ROSFLUT
✓		(6) W3624 SP+DP18", NODR, FI, A2DRW, EL $\frac{1}{4}$ ", ER $\frac{1}{4}$ "
	✓	(6) W3624 SP+DP18", NODR, FI, A2DRW
✓		(7) W3624 SP+DP18", EL $\frac{1}{4}$ ", ER $\frac{1}{4}$ ", FI
	✓	(7) W3624 SP+DP18", FI
✓	✓	(8) BCFW360 24"D, ROSFLUT
✓		(9) WOODTOP 1 $\frac{1}{2}$ "H x 25 $\frac{1}{2}$ "D x 43 $\frac{1}{2}$ " #17 F, L, R
	✓	(9) WOODTOP 1 $\frac{1}{2}$ "H x 25 $\frac{1}{2}$ "D x 43" #17 F, L, R
✓	✓	(10) 8-ROSETTEFLW
✓	✓	(11) 1-FU396 WBRB
✓	✓	(12) 1-MTST
✓	✓	(13) 1-ICROWN
✓	✓	(14) 1-MACANTHUS
✓	✓	(15) 1-TK

AR05FO

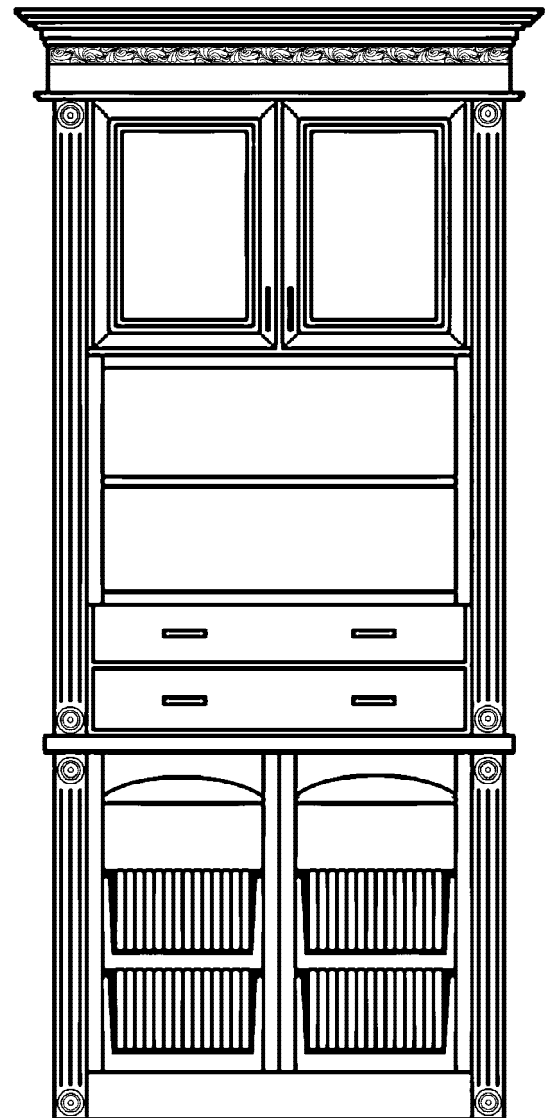
Attach ROSETTEFLW to top and bottom of box columns. Cut wall box columns (BCFW360) to 19" depth. Cut base box columns (BCFB334.5) to 25" depth.

Top Trim – FU396 WBRB between MTST and ICROWN. Place MACANTHUS under ICROWN.

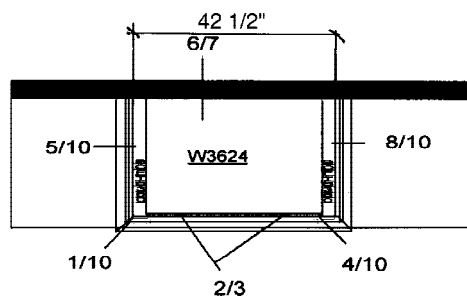
AR05PO

Attach ROSETTEFLW to top and bottom of box columns. Cut wall box columns (BCFW330) to 19" depth. Cut base box columns (BCFB334.5) to 25" depth.

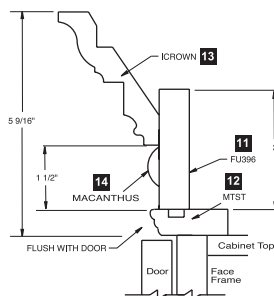
Top Trim – FU396 WBRB between MTST and ICROWN. Place MACANTHUS under ICROWN.



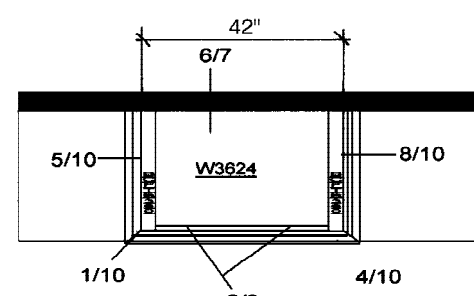
Overall Height: 101 $\frac{1}{16}$ "
(including moulding shown)



Full Overlay Parts Key
(Aerial View)



Top Trim



Partial Overlay Parts Key
(Aerial View)

Island 1

IS01FO Full Overlay	IS01PO Partial Overlay	Parts List
✓	✓	(1) DISLEGSQ
✓	✓	(2) BWB18 FLSHR
✓		(3) BF30 SP-DP18" w/2-RT30, EL $\frac{1}{4}$ ", ER $\frac{1}{4}$ "
	✓	(3) BF30 SP-DP18" w/2-RT30
✓	✓	(4) B18-R FLSHL, FLSHR
✓	✓	(5) DISLEGSQ
✓		(6) WB3634.5 SP-DP6", FLSHL, FLSHR, WBRB-ARCH
✓	✓	(7) DISLEGSQ
✓	✓	(8) TB18-L FLSHL
✓		(9) BF30 EL $\frac{1}{4}$ ", ER $\frac{1}{4}$ "
	✓	(9) BF30
✓	✓	(10) 3DB18BB FLSHL, FLSHR
✓	✓	(11) DISLEGSQ
✓	✓	(12) WB3634.5 SP-DP6", FLSHL, FLSHR, WBRB-ARCH, NODR, FI
✓	✓	(13) 3-TK

IS01FO

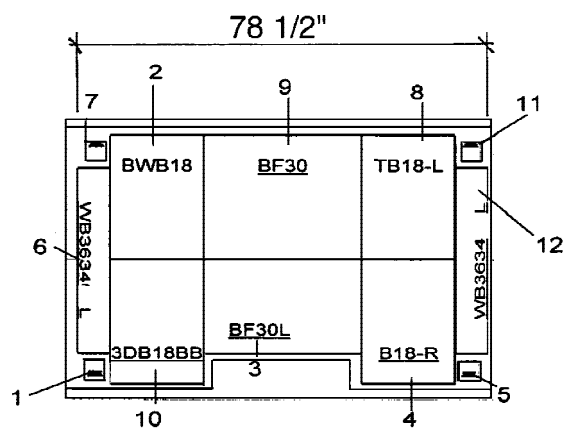
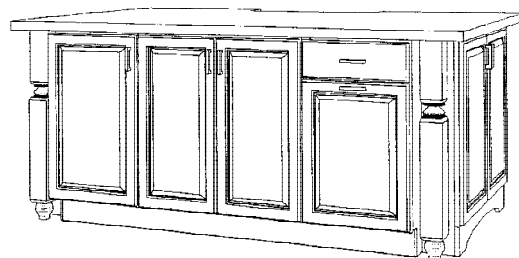
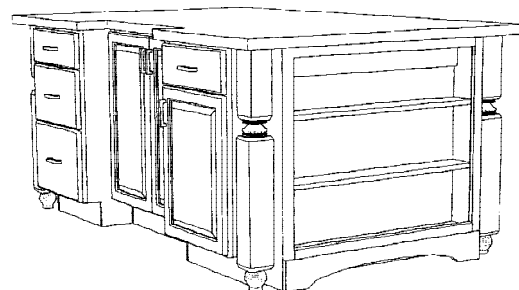
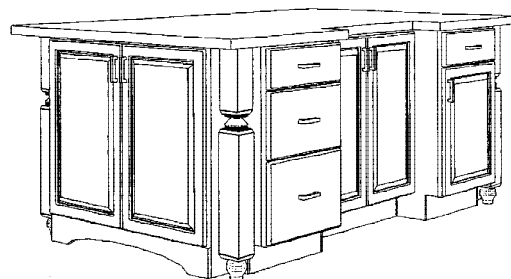
Silicone legs in place under countertop, centered in available space.

NOTE: Not available in Hickory.

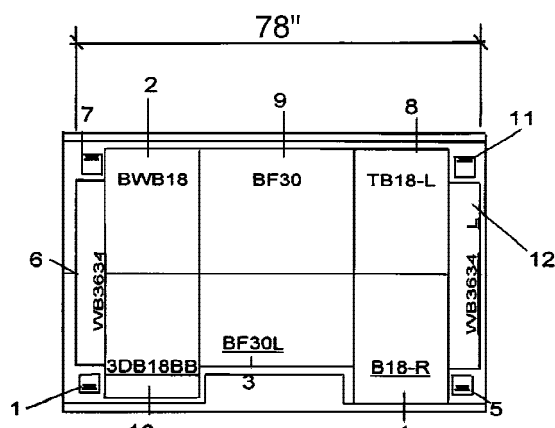
IS01PO

Silicone legs in place under countertop, centered in available space.

NOTE: Not available in Hickory.



Full Overlay Parts Key
(Aerial View)



Partial Overlay Parts Key
(Aerial View)

Distinctions

Island 2

IS02FO Full Overlay	IS02PO Partial Overlay	Parts List
✓	✓	(1) 2PB24 AUTHL, FLSHL, FLSHR, REC-L
✓	✓	(2) DKV24
✓	✓	(3) DISLEGFL
✓	✓	(4) DISLEGFL
✓	✓	(5) FW6
✓	✓	(6) AUTHENTIC $\frac{3}{4}$ " x 24" x 5"
✓	✓	(7) TK

IS02FO

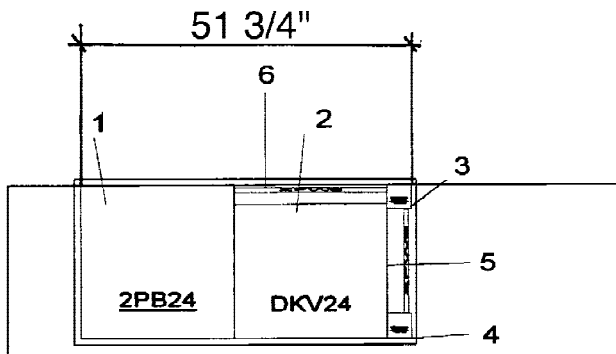
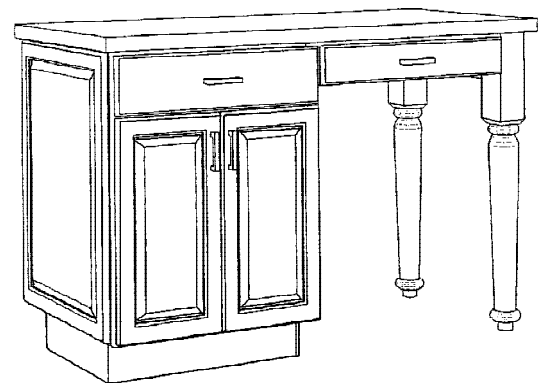
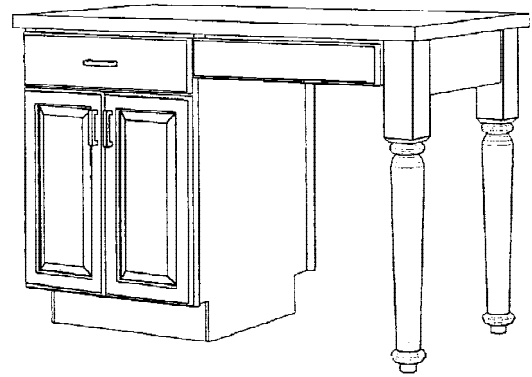
Cut FW6 to fit between island legs to cover side of DKV24. Use AUTHENTIC to cover back of DKV24. Cleat and build corner braces to attach legs.

NOTE: Not available in Hickory.

IS02PO

Cut FW6 to fit between island legs to cover side of DKV24. Use AUTHENTIC to cover back of DKV24. Cleat and build corner braces to attach legs.

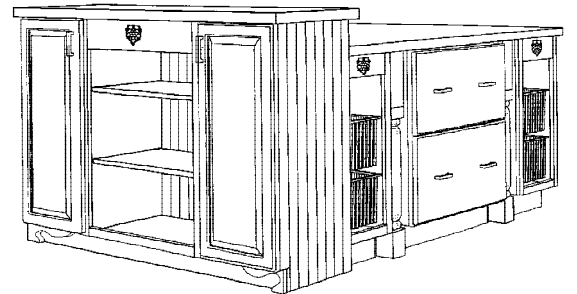
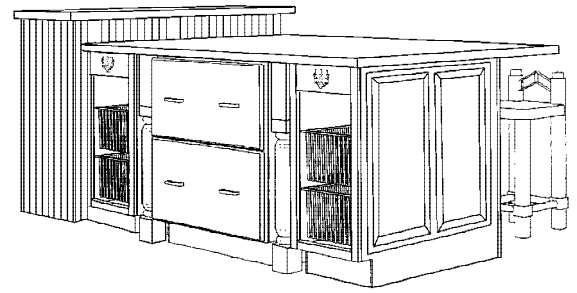
NOTE: Not available in Hickory.



Parts Key
(Aerial View)

Island 3

IS03FO Full Overlay	IS03PO Partial Overlay	Parts List
✓	✓	(1) W1536-L SP+DP18", CFLSHL, ADDTK
✓	✓	(2) W2736, FI, NODR, SP+DP18", VTR-STRT, ADDTK, CSDGBK
✓	✓	(3) W1536-R SP+DP18", CFLSHR, ADDTK
✓	✓	(4) BOB15 VTR-STRT, FLSHR
✓	✓	(5) FB6
✓	✓	(6) 2DB30RT, FLSHL, FLSHR
✓	✓	(7) FB6
✓	✓	(8) BOB15 FLSHL, VTR-STRT
✓	✓	(9) WB3634.5 2WSL3", WBRB
✓	✓	(10) WB3634.5 2WSR3", WBRB
✓	✓	(11) AUTHENTIC 3/32" x 34 1/2" x 34 1/2"
✓	✓	(12) ECP4896
✓	✓	(13) 3-ROSETTEGRP
✓	✓	(14) 2-DISLEGRP
✓	✓	(15) 1-PEDFOOTRETL
✓	✓	(16) MOC96
✓	✓	(17) 2-LGGRPSUPPORT
✓	✓	(18) 3-TK
✓	✓	(19) 1-PEDFOOTRETR



IS02FO

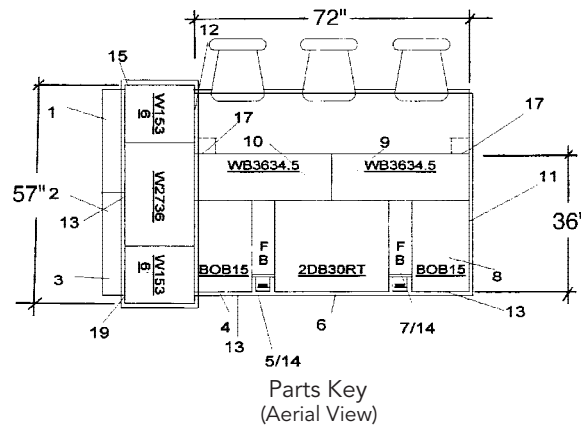
Panel back of 40.5" high cabinets with ECP4896 cut to fit. Use MOC96 as needed at corners. Use 2-LGGRPSUPPORT under low countertop. Panel right side of island with #11. Center DISLEGRP in front of FB6. Place PEDFOOTL&R under W1536s. Attach 3-ROSETTEGRP to center of straight valances on cabinets.

NOTE: Not available in Hickory.

IS02PO

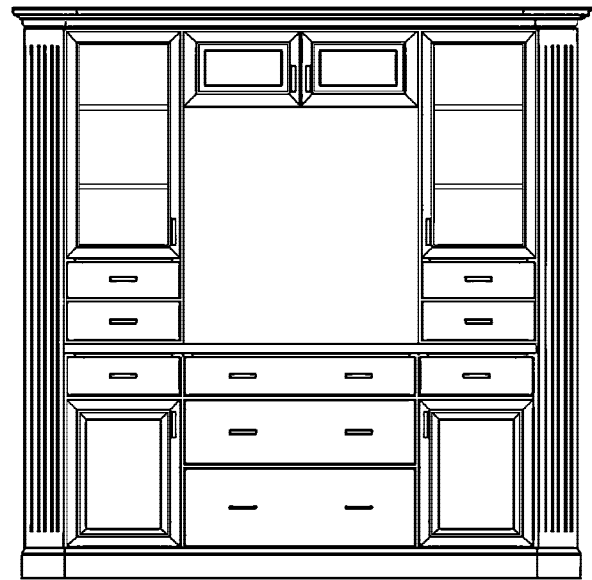
Panel back of 40.5" high cabinets with ECP4896 cut to fit. Use MOC96 as needed at corners. Use 2-LGGRPSUPPORT under low countertop. Panel right side of island with #11. Center DISLEGRP in front of FB6. Place PEDFOOTL&R under W1536s. Attach 3-ROSETTEGRP to center of straight valances on cabinets.

NOTE: Not available in Hickory.



Entertainment Center 1

EC01FO Full Overlay	EC01PO Partial Overlay	Parts List
✓	✓	(1) BCFTB684 FLUTE
✓		(2) B18-L WBRB, EL $\frac{1}{4}$ " , FI
	✓	(2) B18-L WBRB, FI
✓	✓	(3) 3DB36 WBRB
✓		(4) B18-R WBRB, ER $\frac{1}{4}$ " , FI
	✓	(4) B18-R WBRB, FI
✓		(5) W1836-L, ID SP+DP24" , FI, FLSHR, A2DRW, EL $\frac{1}{4}$ "
	✓	(5) W1836-L, ID SP+DP24" , FI, FLSHR, A2DRW
✓	✓	(6) W3612 SP+DP24" , FINBTM, FI
✓		(7) W1836-R, ID SP+DP24" , FI, FLSHL, A2DRW, ER $\frac{1}{4}$ "
	✓	(7) W1836-R, ID SP+DP24" , FI, FLSHL, A2DRW
✓	✓	(8) BCFTB684 FLUTE
✓		(9) WOODTOP – 1 $\frac{1}{2}$ "H x 25 $\frac{1}{4}$ "D x 72 $\frac{1}{2}$ "W #17 F, L, R
	✓	(9) WOODTOP – 1 $\frac{1}{2}$ "H x 25 $\frac{1}{4}$ "D x 72"W #17 F, L, R
✓	✓	(10) 2-FU396 WBRB
✓	✓	(11) 2-ICROWN
✓	✓	(12) 2-MBRAID
✓	✓	(13) 2-MBS



Overall Height: 87 $\frac{5}{16}$ "
(including moulding shown)

Not available in Yardley.

EC01FO

Top Trim – ICROWN with MBRAID in insert (cleat to FU396).

Baseboard – MBS (return into wall). $\frac{1}{4}$ " panel sent separately to be applied to W3612 for finished bottom.

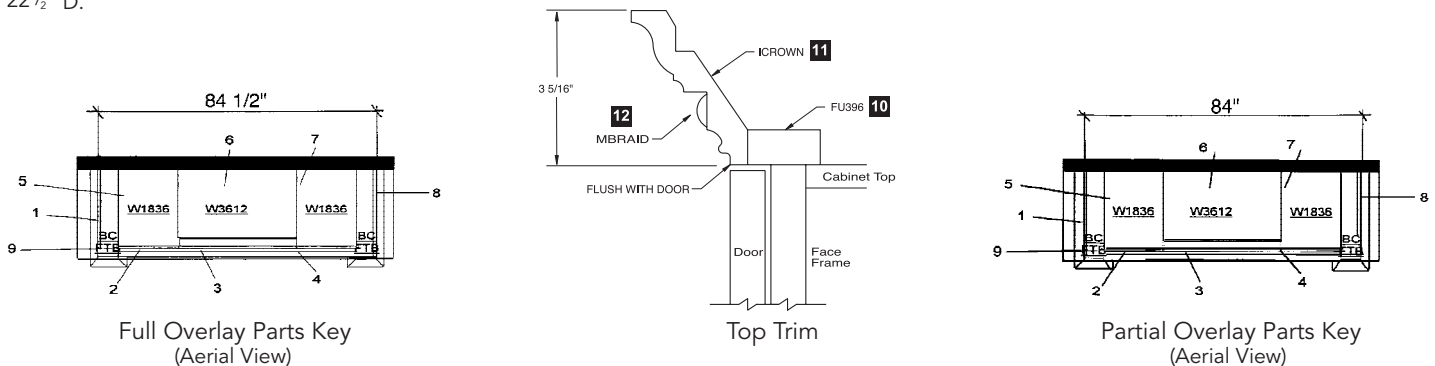
NOTE: Glass not included. Open space for television: 36"W x 36"H x 22 $\frac{1}{2}$ "D.

EC01PO

Top Trim – ICROWN with MBRAID in insert (cleat to FU396).

Baseboard – MBS (return into wall). $\frac{1}{4}$ " panel sent separately to be applied to W3612 for finished bottom.

NOTE: Glass not included. Open space for television: 36"W x 36"H x 22 $\frac{1}{2}$ " D.



Entertainment Center 2

EC02FO Full Overlay	EC02PO Partial Overlay	Parts List
✓	✓	(1) UB1596RT-L FLSHL, AUTHL, WBRB, FI
✓	✓	(2) BCFTB396
✓		(3) SHELVEN 3/4"H x 24"D x 60 1/2"W
	✓	(3) SHELVEN 3/4"H x 24"D x 60"W
✓		(4) SHELVEN 3/4"H x 24"D x 60 1/2"W
	✓	(4) SHELVEN 3/4"H x 24"D x 60"W
✓		(5) RW3015 FINBTM, EL 1/4", FI
	✓	(5) RW3015 FINBTM, FI
✓		(6) RW3015 FINBTM, ER 1/4", FI
	✓	(6) RW3015 FINBTM, FI
✓	✓	(7) BCFTB396
✓	✓	(8) UB1596-R FLSHR, AUTHR, WBRB, FI
✓	✓	(9) V61
✓	✓	(10) FU6 Finish 1 long edge
✓	✓	(11) 2-SPTRINGEND
✓	✓	(12) 2-SPTRINGROPE96
✓	✓	(13) 2-VICCORBEL (L&R)
✓	✓	(16) 3-FU396 WBRB
✓	✓	(17) 3-MTST
✓	✓	(18) 3-LGCROWN
✓	✓	(19) 3-MDENTIL
✓	✓	(20) 1-BP72
✓	✓	(21) 1-MBS
✓	✓	(22) 1-MIC

EC02FO

Attach SPTRINGEND and SPTRINGROPE96 to BCFTB396. Panel back of open shelf area with BP72 and place VICCORBEL in each corner. Use MIC at corners of panel if needed. Cut V61 to 60 1/2".

Top Trim – FU396 WBRB between MTST and LGCROWN. Place MDENTIL under LGCROWN. Wrap MBS around utility base. 1/4" panel sent separately to be applied to RW3015 for finished bottom.

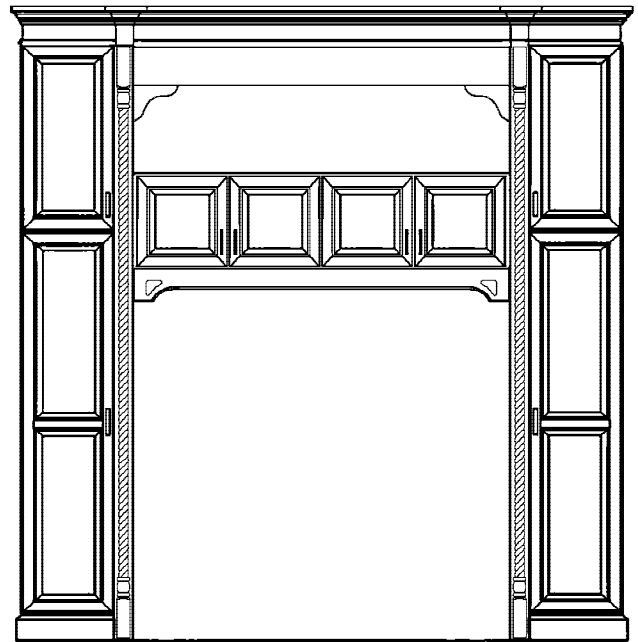
NOTE: Open Space for Television: 54 7/8"W x 60 1/2"H x 22 1/2"D.

EC02PO

Attach SPTRINGEND and SPTRINGROPE96 to BCFTB396. Panel back of open shelf area with BP72 and place VICCORBEL in each corner. Use MIC at corners of panel if needed. Cut V61 to 60".

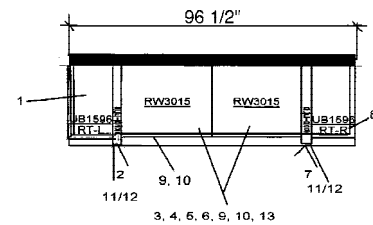
Top Trim – FU396 WBRB between MTST and LGCROWN. Place MDENTIL under LGCROWN. Wrap MBS around utility base. 1/4" panel sent separately to be applied to RW3015 for finished bottom.

NOTE: Open Space for Television: 54 7/8"W x 60"H x 22 1/2"D.

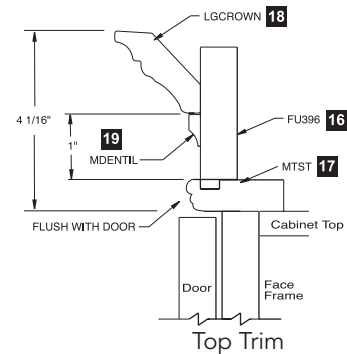


Overall Height: 100 1/16"
(including moulding shown)

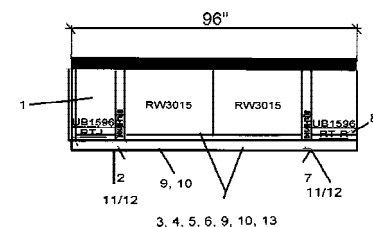
Not available in Yardley.



Full Overlay Parts Key
(Aerial View)



Top Trim



Partial Overlay Parts Key
(Aerial View)

Entertainment Center 3

EC03FO Full Overlay	EC03PO Partial Overlay	Parts List
✓	✓	(1) WBCT2484 SP+DP18", VTRSTRT, FLSHL
✓		(2) B36RT WBRB, EL $\frac{1}{4}$ ", ER $\frac{1}{4}$ ", FI
	✓	(2) B36RT WBRB, FI
✓	✓	(3) WBCT2484 SP+DP18", VTRSTRT, FLSHR
✓		(4) W3636 SP+DP24", FI, NODR, EL $\frac{1}{4}$ ", ER $\frac{1}{4}$ "
	✓	(4) W3636 SP+DP24", FI, NODR
✓		(5) RW3621 EL $\frac{1}{4}$ ", ER $\frac{1}{4}$ ", FI
	✓	(5) RW3621, FI
✓	✓	(6) PILB96 w/MROPE
✓	✓	(7) PILB96 w/MROPE
✓	✓	(8) 3-FU396 WBRB
✓	✓	(9) 3-TLCROWN
✓	✓	(10) 2-MBS

EC03FO

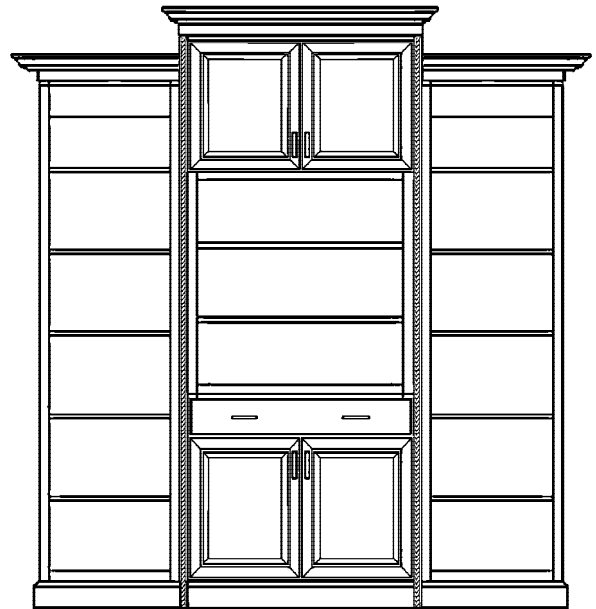
Construct top trim from TLCROWN cleated to FU396. Use MBS trim at baseboard.

NOTE: Open Space for Television: 33"W x 33"H x 22 $\frac{1}{2}$ "D. Shelves will not support television.

EC03PO

Construct top trim from TLCROWN cleated to FU396. Use MBS trim at baseboard.

NOTE: Open Space for Television: 33"W x 33"H x 22 $\frac{1}{2}$ "D. Shelves will not support television.



Overall Height: 101 $\frac{1}{8}$ "
(including moulding shown)

Not available in Yardley.

