

Modifications Quick Reference Sheet

Modification	Page	Code
Add 1 Drawer Below Wall Unit	E•18	ADRW
Add 2 Drawers Below Wall Unit	E•18	A2DRW
Add 3 Drawers Below Wall Unit	E•18	A3DRW
Add Shelf	E•15	ADD_SHLF
Add Shelf – NI	E•15	ADD_SHLF
Add Shelf – FI	E•15	ADD_SHLF
Add Toekick	E•14	ADDTK
Aluminum Frame Doors – 30"	E•3	ALF30
Aluminum Frame Doors – 36"	E•3	ALF36
Attach Toekick	E•14	ATTACHTOE
Authentic Flush Ends	E•11	AUTHFL, AUTHFR, AUTHFL&R
Car Siding Back	E•16	CSDGBK
Car Siding Flush Ends	E•12	CFLSHL, CFLSHR
3" Clipped Corners	E•19	CLIPL, CLIPR, CLIPL&R
6" Clipped Corners	E•20	CLIP6L, CLIP6R, CLIP6L&R
Cover for Organizer/Commode Cabinets	E•20	W/ Cover
Doors/Drawer Fronts Shipped Loose	E•3	LOOSED, LOOSEDWFT
Drawer Front Flat Option	E•3	DFF
Drawer Front Raised Option	E•3	DFR
Drawer Front Slab Option	E•4	DFS
Dummy Fronts	E•16	DUMMYR, DUMMYL, DUMMY, DUMMYL&R
End Extended Back	E•12	EXBKL, EXBKR
Extended Stiles	E•8	EL, ER
Extended Stile with Full Overlay	E•8	ELO, ERO, EL & ERO
Face Frame and Door on End	E•12	FFDL, FFDR, etc.
Face Frame and Doors Only	E•8	FFONLY
Faux Hinge Installation	E•4	FH1, FH2, FH3
Faux Peg	E•4	FXP
Finished Blinds	E•8	FINBL, FINBR
Finished Bottom	E•20	FINBTM
Finished Ends	E•12	LEF, REF
Finished Interior	E•17	FI
Flush Ends	E•12	FLSHL, FLSHR
Fluting – 3" parts	E•21	FLUTL, FLUTR, FLUTL&R
Fluting – 6" parts	E•21	FLUTL, FLUTR, FLUTL&R
Four Drawer Base	E•21	4DBSTACK
Full Shelf	E•15	FS
Furniture Core Construction	E•17	PBD
Insert Doors	E•4	ID
Installed Deep Roll Trays	E•16	DRT
Installed Roll Trays (12" to 24")	E•16	RT, RTLEFT, RTRIGHT
Installed Roll Trays (27" to 36")	E•16	RT, RTLEFT, RTRIGHT
Integral Ends	E•13	INTGL, INTGR
Inverted Frame	E•9	INVFRM
Loose Toekick	E•14	LOOSETK
Modified Full Overlay	E•5	MFO
Mullion Doors	E•5	MD
Natural Interior	E•17	NI
No Door	E•5	NODR

Custom Modifications

Modification	Page	Code
No Toekick	E•14	NOTK
Open Bottom Rail Base	E•9	OBRB
Panel Inserts	E•5	PI
Peninsula Cabinets	E•22	non-standard order
Prairie Mullion Doors	E•6	PRMD
Recessed Toe Space	E•15	RECL, RECR, RECB, etc.
Rose Fluting – 3” parts	E•21	ROSFLUTL, ROSFLUTR, ROSFLUTL&R
Rose Fluting – 6” parts	E•21	ROSFLUTL, ROSFLUTR, ROSFLUTL&R
Scooped Drawers	E•16	SCPDRW, SCPDRWL, SCPDRWR, SCPDWL&R
Special Depths (Increased)	E•22	SP+DP
Special Depths (Reduced)	E•22	SP-DP
Special Heights (Increased)	E•23	SP+HT
Special Heights (Reduced)	E•23	SP-HT
Special Widths (Increased)	E•24 & E•25	SP+WD
Special Widths (Reduced)	E•24	SP-WD
Split Doors	E•6	SPLITDR, SPLITDR.LL, SPLITDR.RR
Split Drawers	E•6	SPLITDRWS
Storage Open Rail Base	E•9	STORB
Three Drawer Base Stack	E•26	3DBSTACK
Toekick Drawer	E•15	DRWTK
Transom Doors - Center Panel	E•7	TCP
Transom Doors - Insert Door	E•7	TID
Tray Dividers	E•17	TD
Two Door Option	E•7	2DR
Utility Reduced Heights	E•26	SPHT-3
Valance Bottom Rail – Arch	E•9	VBR-ARCH
Valance Bottom Rail – Straight	E•9	VBR-STRT
Valance Bottom Rail – English Country	E•9	VBR-EC
Valance Top Rail – Arch	E•10	VTR-ARCH, VTR-ARCH.TOP, VTR-ARCH.MID, VTR-ARCH.BTM
Valance Top Rail – Straight	E•10	VTR-STRT, VTR-STRT.TOP, VTR-STRT.MID, VTR-STRT.BTM
Valance Top Rail – English Country	E•10	VTR-EC, VTR-EC.TOP, VTR-EC.MID, VTR-EC.BTM
Wall End and Back Extended Down	E•14	EXDNL, EXDNR, EXDNLRB
Warming Drawer	E•26	WMDRW
Wide Bottom Rail Base	E•10	WBRB
Wide Bottom Rail Base - Arch	E•10	WBRB-Arch
Wide Bottom Rail Wall	E•10	WBR
Wide Stiles	E•10	WSL1.5, WSR1.5, WSL3, WSR3, WSL&R1.5, WSL&R3
Wide Top Rail	E•11	WTR
3” Wood Top Clipped Corner	E•19	WTCLIPL, WTCLIPR, WTCLIPL&R, WTCLIPLFRT&LBK, WTCLIPRFRT&RBK
6” Wood Top Clipped Corner	E•19	WTCLIP6L, WTCLIP6R, WTCLIP6L&R, WTCLIP6LFRT&LBK, WTCLIP6RFRT&RBK
Wood Tops	E•18	WOODTOP
Wood Tops for Angled End Base Cabinets	E•26	WOODTOP

Modifications to Doors and Drawer Fronts



Aluminum Frame Doors

Specify ALF30, ALF36

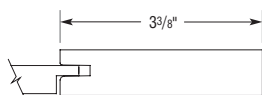
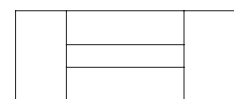
Cabinets can be ordered with Aluminum Frame Doors. Aluminum Frame Doors are full overlay with mitre construction. Cabinet face frame will be matched to the finish specified. Cabinet will have standard interior unless otherwise specified. Frost glass is installed in door.

- Available on Full overlay Door Styles.
- See page G•3 for cabinet and Door Only availability.
- Not available with Modified Full Overlay.

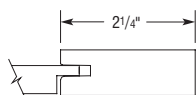
Doors/Drawer Fronts Shipped Loose

Specify LOOSED or LOOSEDWFT. For cabinets with multiple door locations, specify location of modification (TOP, BTM, MID, PENN).

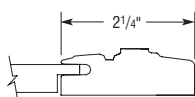
Cabinets can be ordered with Doors or Drawer Fronts Shipped Loose. Doors or Drawer Fronts are packaged separately; hinges are attached to the door. List the loose doors or drawer fronts on the order as a separate line.



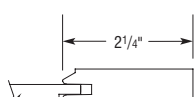
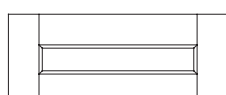
Artisan
Drawer Side Rail / Center Panel
Detail



Artisan
Drawer Top / Bottom
Rail / Center Panel
Detail



Lexington



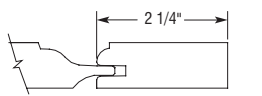
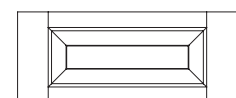
Plaza/Verona

Drawer Front Flat Option

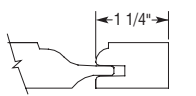
Specify DFF (Drawer Front Flat)

Drawer Front Flat Option (DFF) includes a 5-piece flat panel drawer.

- Available on most cabinets with drawers.
- Available on Artisan, Lexington, Plaza, and Verona.
- DKV's and KT's will be slab.
- Drawer fronts smaller than 5 3/4" high will have slab front.



Drawer Side Rail / Center Panel
Detail – Used on Top/Bottom
Rail, when Drawer Front is over
6 3/4" High



Drawer Top / Bottom
Rail / Center Panel
Detail – Used on
6 3/4" High and
Less Drawer Fronts

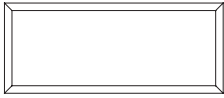
Drawer Front Raised Option

Specify DFR (Drawer Front Raised)

Most Plaza/Verona cabinets with drawers can be ordered with Drawer Front Option. Drawer Front Raised Option (DFR) includes a 5-piece double raised center panel drawer.

- Available on Plaza and Verona.
- End rails are 2 1/4" and crossrails are 1 1/4" (finished width). This rule will apply on all 4 1/4" and 4 1/2" high drawer openings.
- Any drawer openings larger than 4 1/2" high will utilize 2 1/4" end rails and crossrails.
- DKV's, Drop Fronts (excluding Drop Trays), and KT's will be slab.
- Drawer fronts smaller than 5 3/4" high will have slab front.

Modifications to Doors and Drawer Fronts (continued)

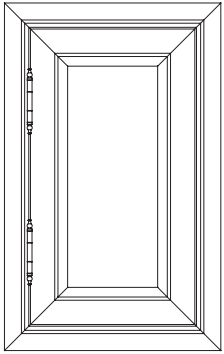


Drawer Front Slab Option

Specify DFS (Drawer Front Slab)

Drawer Front Slab Option (DFS) includes a solid slab drawer front.

- Available in Avignon, Cambridge, Daladier, Hawthorne, Modesto, Prescott, Treyburn, and Yardley.
-



Faux Hinge Installation

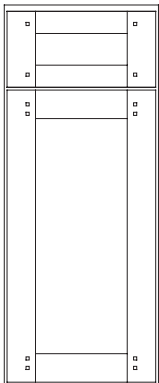
Specify FH1, FH2, FH3

Airedale, Braydon Manor, and Willshire cabinets can be ordered with faux hinges attached to the door.

Number of Faux Hinges is equal to the number of Concealed Hinges per door with the exception of 12" High Cabinets. 12" High Cabinets will have 1 hinge per door.

FH1 – Antique Brass, FH2 – Matte Black, FH3 – Pewter.

- Not available on Walls with Top Hinges, Authentic Ends, Authentic Panels, Wainscoting, Units with pullout assemblies (BBCPO, BCS, BSP, BWB, WSP, WBCPO, BWB w/BB, etc.), Integral Ends.
 - Special placement of Faux Hinges not available.
 - When Faux Hinges are attached, 1/4" extended stiles are required when using varying depths.
 - When Faux Hinge and Modified Full Overlay are ordered together, 15" cabinets will only have one hinge.
-

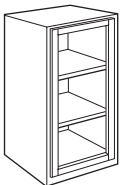


Faux Peg

Specify FXP

Cabinets in available styles can be ordered with Faux Pegs in the door/drawer rail.

- Available in Artisan, Harmony, Hawthorne, Huchenson, Prescott, Rivington, Simsbury, Toulon, and Treyburn.
 - Door rails feature 2 pegs per corner. Drawer rails feature 1 peg per corner.
 - Faux Pegs not available on IDRAIL and DRRAILEND.
 - Not available in painted finishes, Chantille Twilight, Roasted Pepper, Honeycomb, Irish Crème, Jasmine Twilight, Lunar Twilight, Turquoise or Turquoise Rust. Custom color and complementary colors not available with Faux Peg.
 - Not available on double wide/double tall integrated panels, integrated wainscoting panels, integral ends, and slab drawer fronts.
 - When Faux Peg and Integral End are ordered together, only the face door will receive Faux Peg.
 - Not available on standard Slab drawer fronts or with the DFS (Drawer Front Slab) option.
-



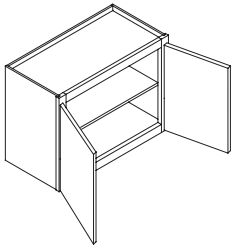
Insert Doors

Specify ID. For cabinets with multiple door locations, specify location of modification (TOP, BTM, MID, PENN).

Cabinets can be ordered with doors routed to accept glass inserts. Glass is not included. Clips to attach glass are included.

- Doors more than 48" tall have two panels routed for glass, divided by a horizontal mullion.
- Not available on units with bi-fold hinges.
- Must specify Finished Interior if desired.
- When Insert Doors and Integral Ends are ordered together, only the face will be an Insert Door.

Modifications to Doors and Drawer Fronts (continued)

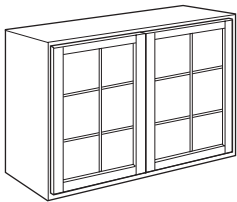


Modified Full Overlay

Specify MFO

Full Overlay Cabinets can be ordered with a modified full overlay. Modified Full Overlay will reduce the size of the top door by 13/16" allowing for a reveal of 1¹/₃₂".

- Available on most wall and tall cabinets.
- When MFO is specified it will be applied to all wall and tall cabinets on order.
- When ordering two wall cabinets that will be field stacked, both cabinets will come with MFO unless otherwise specified.
- MFO adjustment will not occur on Wall Cabinets with ADDTK modification.
- When Integral Ends are ordered in conjunction with MFO, the cross rail will not increase to match the change in reveal.
- When Fluting modifications are selected in conjunction with MFO, the Fluting dimensions do not change.
- When Transom modification is selected in conjunction with MFO, the bottom section of door will decrease in height by 1 inch.
- Recessed Vanity Wall, Aluminum Frame Doors, Tri-view Mirrors, Wine Cube, Wall Box Column Pullout, Valance Top Rail English Country, Apothecary Drawer, and Open End Wall Shelf not available.

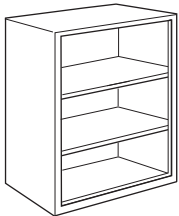


Mullion Doors

Specify MD. For cabinets with multiple door locations, specify location of modification (TOP, BTM, MID, PENN).

Cabinets can be ordered with Mullion Doors. Glass is not included. See the Specialty Doors section for style availability and complete ordering information and size limitations.

- Mullion Doors not available on Braydon Manor, Daladier, Davenport, Hawthorne, Huchenson, Leyden, Modesto, Savannah, Treyburn, Willshire, and Yardley door styles.
- 9" wide cabinets are not available with Mullion Doors.
- Not available on units with bi-fold hinges.
- Must specify Finished Interior if desired.
- Not available on cabinets less than 15" high or taller than 48" high.
- When Mullion Doors and Integral Ends are ordered together, only the face will be a Mullion Door.



No Door

Specify NODR. For cabinets with multiple door locations, specify location of modification (TOP, BTM, MID, PENN).

Cabinets can be ordered without doors. The interior of the cabinet is the standard Natural Maple DMR laminate unless a Finished Interior is specified.

- Hinges are not included with the No Door option.
- Openings larger than 36" wide will have center face frame mullion.

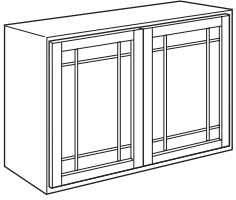
Panel Inserts

Specify PI. For cabinets with multiple door locations, specify location of modification (TOP, BTM, MID, PENN).

Cabinets ordered with Panel Inserts (PI) include 1/4" paneling and doors routed to accept the 1/4" paneling. The 1/4" paneling is designed to accept consumer selected materials (leather, fabric, wallpaper, etc.). Clips to attach the panel are included.

- Doors more than 48" tall have two panels, divided by a horizontal mullion.
- Not available on units with bi-fold doors.
- When Panel Inserts and Integral Ends are ordered together, only the face will be Panel Inserts.

Modifications to Doors and Drawer Fronts (continued)

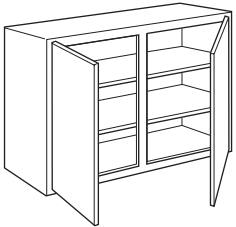


Prairie Mullion Doors

Specify PRMD. For cabinets with multiple door locations, specify location of modification (TOP, BTM, MID, PENN).

Cabinets can be ordered with Prairie Mullion Doors. Glass is not included. All doors feature a square door style.

- Not available on Braydon Manor, Daladier, Davenport, Hawthorne, Huchenson, Leyden, Modesto, Savannah, Treyburn, Willshire, and Yardley.
- 12" and double door 24" wide cabinets are not available with this option.
- Must specify Finished Interior if desired.
- Not available units with bi-fold doors.
- When Prairie Mullion Doors and Integral Ends are ordered together, only the face will be Mullion Doors.

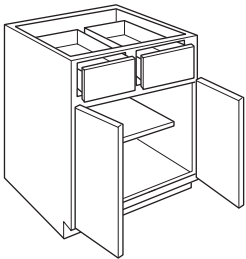


Split Doors

Specify SPLITDR, SPLITDR.LL (Split Doors Left-Hinged), or SPLITDR.RR (Split Doors Right-Hinged)

Butt Doors are standard on double door cabinets 24" to 39" wide. If a center face frame mullion is desired, specify the Split Doors option. If the unit includes a drawer, the drawer is one wide drawer unless the Split Drawer option is selected.

- Valance Top Rail not available with Split Door option.



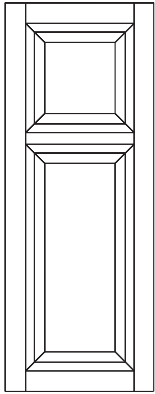
Split Drawers

Specify SPLITDRWS

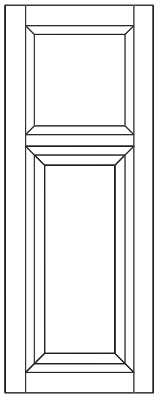
When a unit includes a drawer, one wide drawer configuration is standard. If two small, side-by-side drawers are desired, specify the Split Drawer option.

- Split Drawer front widths will not be aligned with the doors unless the Split Door option is specified.
- When SPHT+DRW is ordered in conjunction with Split Drawers, only top drawers will be split.
- When split drawers are specified on a drawer base, only the top drawer will be split.
- Minimum cabinet width is 24".

Modifications to Doors and Drawer Fronts (continued)



TCP (Transom Center Panel)



TID (Transom Insert Door)

Transom Modification

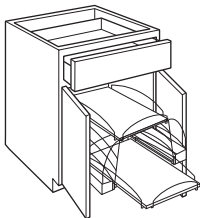
Specify TCP (Transom Center Panel) or TID (Transom Insert Door)

Cabinets can be ordered with Transom Doors. Transom Center Panel (TCP) includes a center panel in both openings. Transom Insert Door (TID) includes the top opening routed to accept glass inserts. Clips to attach glass are included.

- Available on Artisan, Harmony, Hawthorne, Huchenson, Prescott, Rivington, Simsbury, Toulon, and Treyburn.
- Available on door heights of 36", 39", 42", 45", and 48".
- The upper section of the door will always have a 12" tall section, which includes the width of the upper crossrails and the upper opening.
- Door on Authentic End will always be Transom Center Panel (TCP).
- FFD option will always match the face.
- Corner Walls and Wall Message Centers are only available with TCP.
- Center panel standard on lower section. ID option on lower section available by specifying ID.
- When Transom and Integral End are ordered together, only the face door will be Transom.
- When MFO modification is selected in conjunction with Transom, the bottom section of door will decrease in height by 1 inch.

Cabinet Availability:

- W0936-W4836, W0939-W4839, W0942-W4842, W0945-W4845, W0948-W4848;
- WWT1554-WWT3654, WWT1557-WWT3657, WWT1560-WWT3660;
- SW2436-SW3636, SW2439-SW4839, SW2442-SW4842;
- CW2436-CW2442 (TCP ONLY);
- DW2436, DW2439, DW2442, DW2445, DW2454, DW2460, DW2736, DW2739, DW2742, DW2745, DW2754, DW2760, DW2448FH, DW2748FH, DWL2436, DWL2442, DWL2460, DWT2454, DWT2457, DWT2460, DWT2754, DWT2757, DWT2760, DWLT2454, DWLT2460;
- PDW2436, PDW2439, PDW2442, PDW2445, PDW2448FH, PW1536-PW3636;
- AEW2436, AEWFFD2436, AEW3636, AEWFFD3636, AEW2439, AEWFFD2439, AEW3639, AEWFFD3639, AEW2442, AEWFFD2442, AEW3642, AEWFFD3642, AEW2436-45, AEWFFD2436-45, AEW3636-45, AEWFFD3636-45, AEW2439-45, AEWFFD2439-45, AEW3639-45, AEWFFD3639-45, AEW2442-45, AEWFFD2442-45, AEW3642-45, AEWFFD3642-45, AEW1236, AEW1239, AEW1242, AW1236, AW1239, AW1242;
- WSR2136, WSR2142;
- WMC1236, WMC1242 (TCP ONLY)



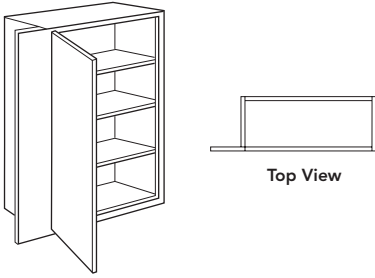
Two Door Option

Specify 2DR. When Two Door Option is specified, cabinets will convert from one to two doors.

Cabinets available with two door option include:

- SW3630, SW3636, SW3642, SW3633, SW3639
- AEW3630-45, AEWFFD3630-45, AEW3636-45, AEWFFD3636-45, AEW3642-45, AEWFFD3642-45
- BPPP24
- UV2484
- UVD2484
- VCSD48, VCSD4832, VCSD4834.5

Modifications to Frames

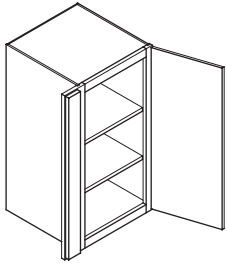


Extended Stiles

Specify **EL__** (Extended Left Stile) or **ER__** (Extended Right Stile) and fill in the added dimension required

To eliminate the need for fillers, cabinets can be ordered with Extended Stiles. Two options are available when ordering Extended Stiles: $\frac{1}{8}$ " only or $\frac{1}{4}$ " increments up to an additional 3".

- Extended Stiles are not available on the angled end of any angle frame cabinet or on a clipped end rail.
- When the cabinet has doors, Flute option available on 3" Extended Stiles only.
- Peninsula cabinets must have Extended Stile option specified for Front and Peninsula side.
- $\frac{1}{8}$ " EL and/or ER options need to be selected when the adjacent cabinets are ordered with Increased or Reduced Depth option or placed next to a wall. Applies to Full Overlay only.
- $\frac{1}{8}$ " EL and/or ER options recommended on cabinets with #12 profile selected.

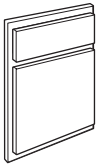


Extended Stile with Full Overlay

Specify **ELO** (Extended Left Stile with Overlay), **ERO** (Extended Right Stile with Overlay), or **EL&RO** (Extended Left and Right Stiles with Overlay)

Cabinets can be ordered with Extended Stiles of 3" that include a $2\frac{9}{16}$ " profiled overlay. The overlay is sent loose for field trimming.

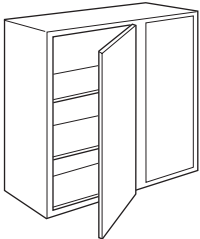
- Overlays cannot be fluted.
- Styles with #18 profile will be sent with #14 profile.
- Peninsula cabinets must have Extended Stile option specified for Front and Peninsula side.



Face Frame and Doors Only

Specify **FFONLY**

The top and bottom edges of the frame are not available in finished quality. While the vertical edges are finished, the standard groove to accept the $\frac{1}{2}$ " end panel is on the back vertical edge of all Face Frames and Doors.

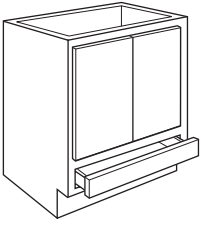


Finished Blinds

Specify **FINBL** (Finished Blind Left) or **FINBR** (Finished Blind Right)

The blind section of a square corner wall or blind corner base can be filled in to appear as a solid section. Specify Finished Blind left or right.

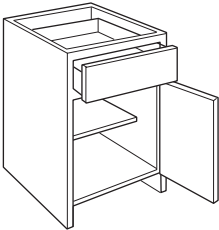
Modifications to Frames (continued)



Inverted Frame

Specify INVFRM

Base, Stacked Wall, and 48" to 60" Diagonal Wall cabinets can be ordered with the face frame openings inverted. The Inverted Frame option applies only to an actual exchanging of opening locations, not a re-sizing of any opening. Drawer openings relocated to the bottom of a base must always be a working drawer.

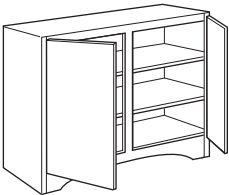


Open Bottom Rail Base

Specify OBRB

With this option, the sub-toekick on base and tall cabinets is eliminated and the stiles are extended down 4½", which is the height of the toekick space.

- When OBRB is selected for wall cabinets, it increases the overall height of the wall cabinet by 4½".
- Available in place of WBRB on office units with the open area remaining 3½".
- Maximum frame opening width on OBRB is 57".

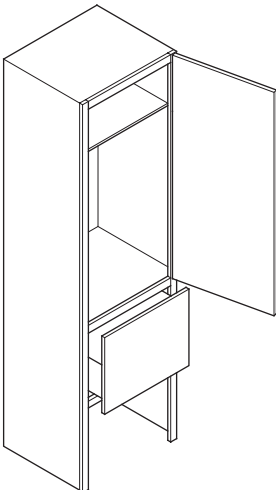


Valance Bottom Rail

Specify VBR-ARCH, VBR-STRT, VBR-EC, VBR-ARCH.PENN, VBR-STRT.PENN, or VBR-EC.PENN

Wall cabinets can be ordered with an Arch, Straight, or English Country valance in place of the standard bottom rail. The ends and back are extended down with the VBR.

- Arch and English Country valances are not available on cabinets with frame openings less than 12" wide.
- The overall cabinet height increases by 3½".
- Finished Bottom not available with VBR-ARCH.
- When Finished Bottom is ordered with VBR-STRT and VBR-EC, additional blocking in field may be required.
- When VBR is specified in conjunction with Integral Ends, the cross rails on the Integral End will not increase to match the extension.



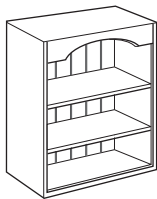
Storage Open Rail Base

Specify STORB

With this option, the 4½" sub-toekick on base and tall cabinets is eliminated and the face frame stiles, end panels, and back are extended down the amount specified.

- This option is available in ¼" increments from 4¾"-18".
Example: When selecting an EET1878 with the STORB modification of 18", the overall cabinet height will be 91.5". (i.e. 78-4.5+18=91.5)
- Available on EET____, EEDB__, and EEOB__ ONLY. These codes located in Other Room Cabinetry Section.

Modifications to Frames (continued)

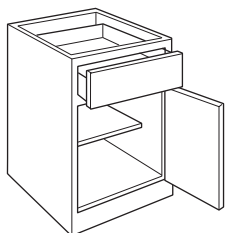


Valance Top Rail

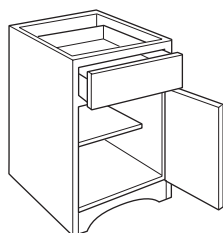
Specify **VTR-ARCH**, **VTR-ARCH.TOP**, **VTR-ARCH.MID**, **VTR-ARCH.BTM**, **VTR-EC**, **VTR-EC.TOP**, **VTR-EC.MID**, **VTR-EC.BTM**, **VTR-STRT**, **VTR-STRT.TOP**, **VTR-STRT.MID**, or **VRT-STRT.BTM**

Cabinets with frame openings of 12" or more can be ordered with an Arch or English Country valance in place of the standard top rail when the No Door option is chosen. The Straight valance top rail is available on most cabinets regardless of the width of the frame opening.

- Not available on units with Split Doors option.
- Not available on cabinets over 39" wide.
- Must specify Finished Interior, if desired.
- Specify **VTR-ARCH.TOP**, **VTR-ARCH.MID**, **VTR-ARCH.BTM**, **VTR-EC.TOP**, **VTR-EC.MID**, **VTR-EC.BTM**, **VTR-STRT.TOP**, **VTR-STRT.MID**, or **VRT-STRT.BTM** for Tall, Diagonal Wall, and Stacked Wall cabinets. For all other cabinets specify **VTR-ARCH**, **VTR-EC**, or **VTR-STRT**.



WBRB



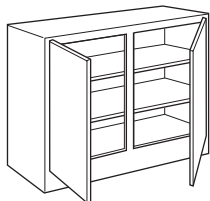
WBRB-Arch

Wide Bottom Rail Base

Specify **WBRB** or **WBRB-Arch**

The recessed toe space on base cabinets can be eliminated by extending the face frame down with the end panels.

- When **WBRB** is selected for wall cabinets, it increases the overall height of the wall cabinet by 4½". It is not necessary to pick both **ADDTK** and **WBRB** to get this look on walls. All doors feature a square door style to match other base cabinets on order.
- Maximum frame opening width on **WBRB-Arch** is 57".
- Minimum frame opening width on **WBRB-Arch** is 12".

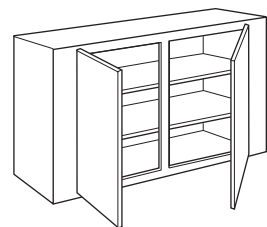


Wide Bottom Rail Wall

Specify **WBR__** and fill in the added height dimension required

The standard 1½" bottom rail on wall cabinets can be increased in ¼" increments up to an additional 3½".

- Ends and back are extended down with the frame. If desired, field modification is possible.
- The overall height of the cabinet increases by the amount of **WBR** specified.
- When **Finished Bottom** option is selected, additional blocking in field may be required.
- When **WBR** is specified in conjunction with **Integral Ends**, the cross rails on the **Integral End** will not increase to match the extension.



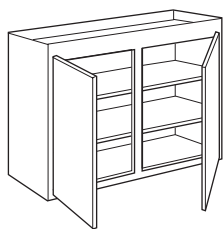
Wide Stiles

Specify **WSL1.5**, **WSR1.5**, **WSL3**, **WSR3**, **WSL&R1.5**, or **WSL&R3**

Cabinets can be ordered with a Wide Stile. Wide Stiles can be ordered in 1½" and 3" increments. The Wide Stile 1½" option increases the stile size to 3" overall. The Wide Stile 3" option increases the stile to a total of 4½" wide. The overall back width of the cabinet does not change with this option. The face frame opening is reduced.

- On units with doors and/or drawers, only the Wide Stile 3" can be fluted. On units without doors, the Wide Stile 1½" can be fluted utilizing the standard 1½" end rail as part of the fluting location.
- Cabinets not available with this option include, but not limited to **WWT**.
- Wide stile not available with clip on same side.

Modifications to Frames (continued)



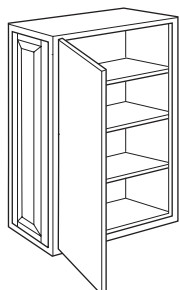
Wide Top Rail

Specify WTR___ and fill in the added height dimension required

Most cabinets can have the standard 1½" top rail increased in ¼" increments up to an additional 3½". Cabinet height increases by the dimension given.

- Ends and backs are extended up with frame. If desired, field modification is possible.
- Not available on 96" high units in combination with the WBRB or Integral End option.
- Not available with any cabinet that utilizes an English Country valance in the top rail.
- When WTR is specified in conjunction with Integral Ends, the cross rails on the Integral End will not increase to match the extension.

Modifications to Ends



Authentic Flush Ends

Specify AUTHFL (Authentic Flush Left), AUTHFR (Authentic Flush Right), or AUTHFL&R (Authentic Flush Left and Right)

Authentic Flush Ends are available on most cabinets where the look of a working door on the end is desired. The fixed door panel is applied to a finished flush end. Wall cabinets in arched door styles will have a square door applied if the cabinet depth is less than 12". Base cabinets have a full height door applied over a finished flush end.

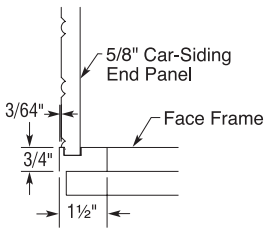
- Finished Flush Ends (5/8" thick) standard on Authentic Ends.
- On base or tall cabinets, Recessed Toe Space must be specified if desired.
- Not available on cabinet backs.
- If cabinet is over 24" deep, two doors will be applied to end.
- Not available on Box Column Fillers, AEW, AW, AB, ABF24, AEB, AEBF, AEW (22½ degree), and AEW-45.
- Extended Stile (EL/ER) modification cannot be used on the same sides as Authentic End.

Minimum Cabinet Depth for Authentic Ends	Non-Peninsula	Peninsula
Aurora, Biltmore, Marquis, Simsbury, Harmony, Plaza, Prescott, Rivington, Verona, Yardley	8"	8"
Artisan, Cambridge, Savannah, Galleria, Girard, Hawthorne, Huchenson, Modesto, Toulon, Treyburn	8½"	8½"
Airedale, Avignon, Braydon Manor, Daladier, Davenport, Lexington, Leyden, Willshire	9"	9"
Kingston, Madison	9¼"	9¼"

Minimum Cabinet Depth for 3" Clipped Corners	Non-Peninsula	Peninsula	Front & Back
Aurora, Biltmore, Marquis, Simsbury, Harmony, Plaza, Prescott, Rivington, Verona, Yardley	11"	11"	14"
Artisan, Cambridge, Savannah, Galleria, Girard, Hawthorne, Huchenson, Modesto, Toulon, Treyburn	11½"	11½"	14½"
Airedale, Avignon, Braydon Manor, Daladier, Davenport, Lexington, Leyden, Willshire	12"	12"	15"
Kingston, Madison	12¼"	12¼"	15¼"

Minimum Cabinet Depth for 6" Clipped Corners	Non-Peninsula	Peninsula	Front & Back
Aurora, Biltmore, Marquis, Simsbury, Harmony, Plaza, Prescott, Rivington, Verona, Yardley	18"	18"	24"
Artisan, Cambridge, Savannah, Galleria, Girard, Hawthorne, Huchenson, Modesto, Toulon, Treyburn	18"	18"	24"
Airedale, Avignon, Braydon Manor, Daladier, Davenport, Lexington, Leyden, Willshire	18"	18"	24"
Kingston, Madison	18"	18"	24"

Modifications to Ends (continued)

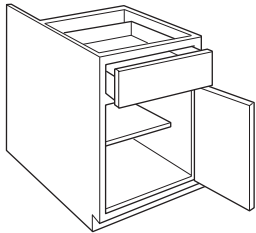


Car Siding Flush Ends

Specify **CFLSHL** (Car Siding Flush Left End) or **CFLSHR** (Car Siding Flush Right End)

Cabinets can be ordered with a $\frac{5}{8}$ " finished veneer end panel to achieve a car siding flush end appearance.

- Cabinets not available with Car Siding Flush Ends include, but not limited to: AEB24, AEBF24, AB24, ABF24, AEW12, AW12, CC, RWW, and TV.
- Available on angle side of ABF only.
- Finished End standard on Car Siding Flush End.

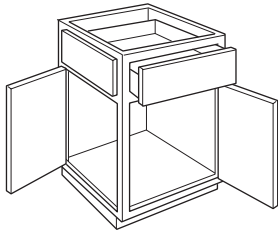


End Extended Back

Specify **EXBKL** (End Extended Back Left) or **EXBKR** (End Extended Back Right) and fill in the amount to be extended

The end panel can be extended back in $\frac{1}{4}$ " increments up to an additional 12". Finished End must be specified if desired.

- Not available on diagonal wall or angled cabinets.
- End treatment must be specified (i.e. LEF, AUTHL, etc.)

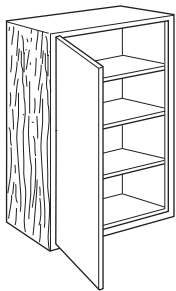


Face Frame and Door on End

Specify **FFDR.HL** (Face Frame and Door on Right End – Hinge Left), **FFDR.HR** (Face Frame and Door on Right End – Hinge Right), **FFDR.HL.FH** (Full Height Face Frame and Door on Right End – Hinge Left), **FFDR.HR.FH** (Full Height Face Frame and Door on Right End – Hinge Right), **FFDL.HL** (Face Frame and Door on Left End – Hinge Left), **FFDL.HR** (Face Frame and Door on Left End – Hinge Right), **FFDL.HL.FH** (Full Height Face Frame and Door on Left End – Hinge Left), or **FFDL.HR.FH** (Full Height Face Frame and Door on Left End – Hinge Right)

When a working door is desired on the end of a cabinet, specify Face Frame and Door on End.

- On base and tall cabinets, a Recessed Toe Space is standard.
- Option not available on both ends of cabinet.
- If the WBRB option is selected, then all sides of cabinet will be WBR.
- Not available on Peninsula units, Criss-Cross Wine Rack unit, Wall with Wine Rack unit, units with Tambour Section, units with End Extended Back option, or units with Roll Trays.

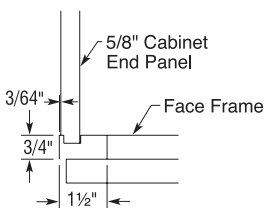


Finished Ends

Specify **LEF** (Left End Finished) or **REF** (Right End Finished)

Finished Ends should be specified on any cabinet end that will be exposed after installation.

- Not necessary when ordering Authentic Ends, Flush Ends, Car Siding Flush Ends, or Face Frame and Door on End.



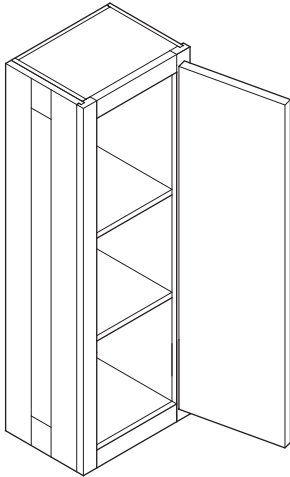
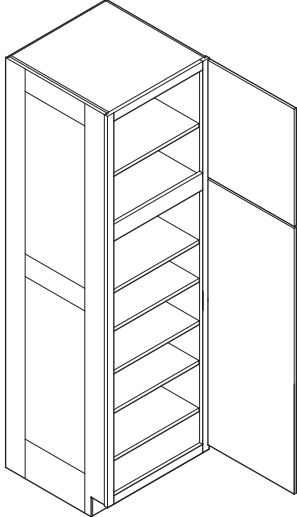
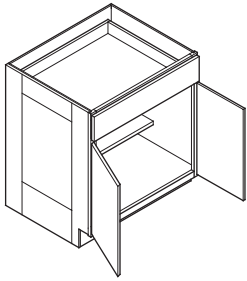
Flush Ends

Specify **FLSHL** (Flush Left End) or **FLSHR** (Flush Right End)

Cabinets can be ordered with a $\frac{5}{8}$ " finished veneer end panel to achieve a Flush End appearance.

- Cabinets not available with this option include, but not limited to: AEB24, AEBF24, AB24, ABF24, AEW12, AW12, CC, RWW, and TV.
- Available on angle side of ABF only.
- Finished End standard on Flush End.

Modifications to Ends (continued)

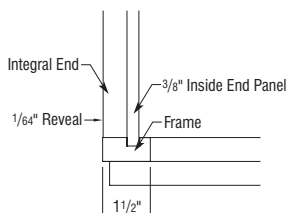


Integral Ends

Specify INTGL (Integral Ends Left), or INTGR (Integral Ends Right)

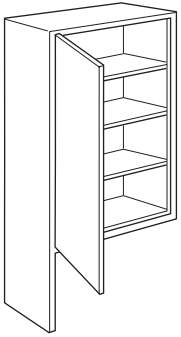
Integral Ends are available on most cabinets where the look of a furniture end is desired. Integral Ends will closely match the door style specified on the order.

- Available with mortise & tenon door styles only. Treyburn, Simsbury, Marquis, MDF and mitred door styles are not available.
- Outside profile will be #12 regardless of door profile.
- On wall cabinets, all rails and stiles are sized to match the selected door styles.
- On Arch door styles, Integral End will be arch on cabinets 12"-24" deep. 24 $\frac{1}{4}$ "-30" depth will be square.
- On base, vanity, and tall cabinets, the bottom rail is always 7" high. Harmony, Plaza, Prescott, Rivington, Verona, and Yardley utilize 3 $\frac{1}{2}$ " rails and stiles. Artisan, Hawthorne, Huchenson, Kingston, Madison, and Toulon utilize 4" rails and stiles.
- Cabinets over 48" will always have 2 equally sized panels in height.
- Cabinets deeper than 24" will have double wide panels.
- Minimum wall cabinet depth is 9".
- Minimum base cabinet depth is 12".
- Minimum cabinet height is 18".
- Select availability. See SKU notes for limitations.
- Not available in conjunction with FFD on End, No Toekick, Add Toekick, Recessed Toekick, Toekick Drawer, Loose Toekick and Clipped Corners.
- 96" tall cabinets will have ATTACHTOE standard. 96" tall cabinets not available with WTR.
- When MFO, WTR, WBR, or VBR is selected in conjunction with Integral Ends, the cross rail on the Integral End will not increase to match the extension.
- The maximum cut out for oven cabinets is 3" less than the cabinet width.



Custom Modifications

Modifications to Ends (continued)



Wall End and Back Extended Down

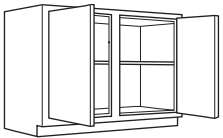
Specify EXDNL__ (Wall End Extended Down Left) or EXDNR__ (Wall End Extended Down Right) and fill in the amount to be extended

Specify EXDNLRB__ (Back Extended Down) when both right and left ends are extended down and fill in the amount to be extended

The end panel and attached face frame rail can be extended down in $\frac{1}{4}$ " increments up to an additional 24". When one or both ends are extended down, the interior of the extended ends is skinned to match the cabinet exterior.

- If both the ends and the back are extended down, the cabinet must be Finished Interior.
- When ordering a cabinet with WBR or VBR in conjunction with End Extended Down, overall cabinet height is standard height plus WBR or VBR plus End Extended Down.
- Not available on units with FFD on End option.

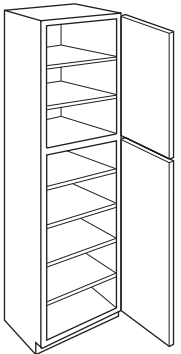
Modifications to Toekicks



Add Toekick

Specify ADDTK

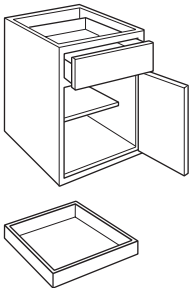
Wall cabinets can be ordered with a $4\frac{1}{2}$ " high recessed toekick added. The overall height of the cabinet increases by $4\frac{1}{2}$ ". All doors feature a square door style to match other base cabinets on order.



Attach Toekick

Specify ATTACHTOE

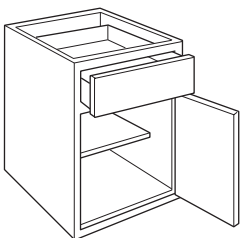
For 96" cabinets only, specify Attach Toekick if desire toekick attached to cabinet.



Loose Toekick

Specify LOOSETK

Specify Loose Toekick if desire toekick unattached from cabinet.

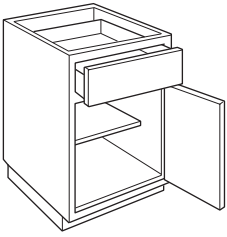


No Toekick

Specify NOTK

To reduce the height of the cabinet by $4\frac{1}{2}$ " and remove the Recessed Toe Space.

Modifications to Toekicks (continued)

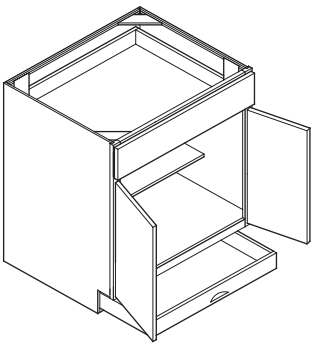


Recessed Toe Space

Specify RECL (Recessed Left End), RECR (Recessed Right End), RECB (Recessed Back), RECL&R (Recessed Left and Right Ends), RECL&B (Recessed Left and Back Ends), RECR&B (Recessed Right and Back Ends), or RECL&R&B (Recessed Left, Right and Back Ends).

Cabinets with a toekick are available with recessed toe spaces on ends and/or back.

- Recessed Toe Space on ends is not available when the WBRB, OBRB, or WBRB-Arch option is selected for the front.
- Recessed Toe Space standard when FFD ordered on end.



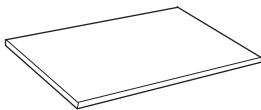
Toekick Drawer

Specify DRWTK

Cabinets with toekicks are available with a toekick drawer.

- Available on all 24", 30", and 36" wide base and tall cabinets that have standard toekick construction.
- Toekick drawer includes decorative pull.
- Not available on units with Clipped Corners, Special Depth, units with Modified Bottom Rails, or units with Modified Toekick.
- Available in 24" depth only.
- Front is unfinished, allow enough toe skin to cover front.

Modifications to Shelves

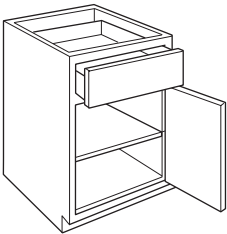


Add Shelf

Specify ADD1SHLF, ADD2SHLF, ADD3SHLF, ADD4SHLF, or ADD5SHLF

To add a standard shelf in cabinets.

- Wall cabinets must have minimum 15" high opening.



Full Shelf

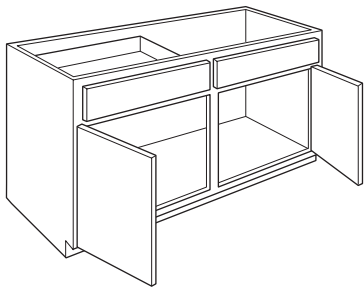
Specify FS

To replace the standard half-depth shelf in base cabinets with an adjustable full-depth shelf.

- Standard on Base Full, Peninsula Base, Peninsula Base Full, and Vanity Base Full units.

Custom Modifications

Modifications to Drawers and Roll Trays

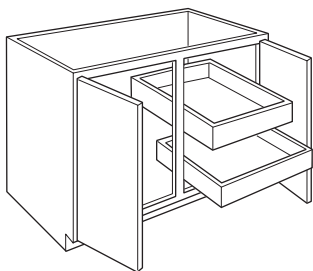


Dummy Fronts

Specify **DUMMYR** (Dummy Right), **DUMMYL** (Dummy Left), **DUMMY** (One Top Drawer), or **DUMMYL&R** (Dummy Left and Right)

Base and vanity cabinets with two side by side working drawers can be ordered with dummy fronts in place of the working drawers.

- To achieve the two drawers in units 24" to 39", split drawers must be specified.

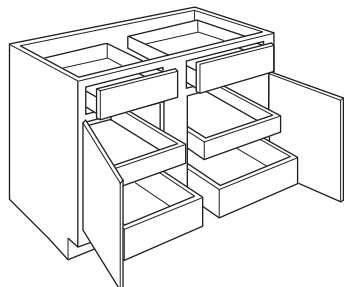


Installed Roll Trays

Specify **RT** (Roll Tray), **RTLEFT** (Roll Tray Left), or **RTRIGHT** (Roll Tray Right)

Roll Trays in cabinet widths of 12" to 48" can be installed.

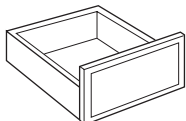
- Available installed in cabinets 12", 15", 18", 21", and 24" deep.
- Roll Tray option substitutes pullout for standard shelf.
- Largest single full width roll tray is available on a 36" wide cabinet with special width up to 38³/₄".
- Not available on units with FFD on end.



Installed Deep Roll Trays

Specify **DRT** (Deep Roll Tray)

- Roll Trays in cabinet widths of 12" to 48" can be installed.
- Available installed in cabinets 12", 15", 18", 21", and 24" deep.
- Not available on units with FFD on End or 2 DBXXRT cabinets.
- Modification available on standard roll tray cabinets only.
- Modification upgrades bottom roll tray only on base cabinets and bottom 2 roll trays on utility cabinets.
- Largest single full width roll tray is available on a 36" wide cabinet with special width up to 38¹/₄".

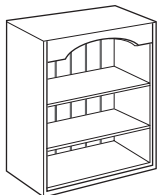


Scooped Drawers

Specify **SCPDRW**, **SCPDRWL** (Scooped Drawer Left), **SCPDRWR** (Scooped Drawer Right), or **SCPDWL&R** (Scooped Left and Right Drawers)

Cabinets with drawers can be ordered with the top drawer box height reduced to 2" to allow for clearance of cooktops, etc.

- Only top drawer is modified when specified on drawer base units.



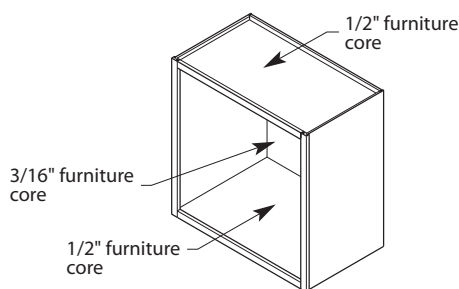
Car Siding Back

Specify **CSDGBK**

Cabinets that are available as Finished Interior cabinets are available with an installed ³/₁₆" Car Siding Back in the same color as the exterior.

- If the Finished Interior option is not standard on the cabinet, the Finished Interior option will be added to your order by customer service.
- If Car Siding interior sides are desired, Car Siding panel must be ordered separately and field installed.
- Cabinets not available with Car Siding Back include, but not limited to: AB24, ABF24, AEB24, AEBF24, AW1230, AW1236, AEW1230, AEW1236, and AEW1242.

Modifications to Interiors (continued)

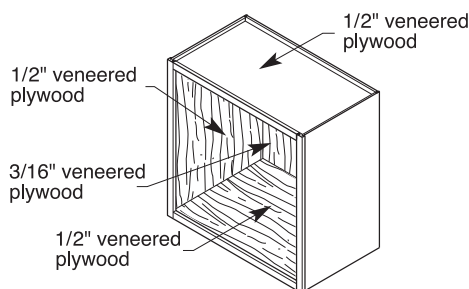


Furniture Core Construction

Specify PBD

Most cabinets can be ordered as PBD. With the PBD option, the cabinet shelves, tops, bottoms, and backs will change to furniture core.

- Not available on cabinets with Finished Interior (FI) or in conjunction with Natural Interior (NI).
- Furniture Core Construction option is not available on Box Column Pullouts, Wood/Range Hoods, Sink Fronts, Wainscoting, LSB Drum Unit, Range Panels, AG19, Hearth Door Front Configurations, FFD1515, and Open Shelf Specialty Cabinets. PBD is also not available on any other non-cabinet items, such as mouldings, embellishments, or other accessories.

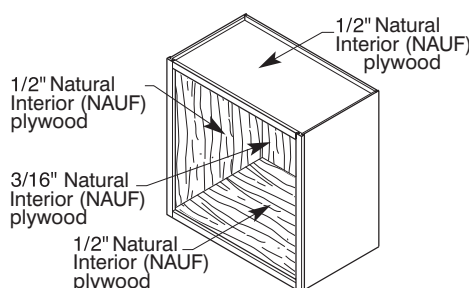


Finished Interior

Specify FI

Most cabinets can be ordered with Finished Interiors in place of the standard DMR laminate interiors. With the Finished Interior option, the cabinet interior is stained to match the exterior of the cabinet. The cabinet shelf and top and bottom exteriors are also stained to match with this option.

- Pullout options such as drawer boxes, roll trays, swingouts, etc., remain in the Natural wood color.
- The Finished Interior option is not available on the SLSB36 or SSS36 units due to the altered construction of these units.
- On all cabinets with a white painted finish, FI option must be used if white interior finish is desired.

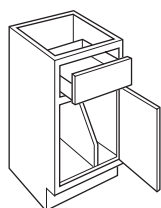


Natural Interior

Specify NI

Most cabinets can be ordered as NI. With the NI option, the end panels, shelves, tops, bottoms, backs, toekicks, and corner blocks of the cabinet will change to an upgraded natural finished hardwood veneer interior and will be both No Added Urea Formaldehyde (NAUF) and California Air Resources Board (CARB 2) compliant.

- Some interior accessory items, MDF doors, and all non-plywood items will maintain original material specifications. They will meet current California Air Resources Board (CARB) requirements but will not be NAUF compliant.



Tray Dividers

Specify TD

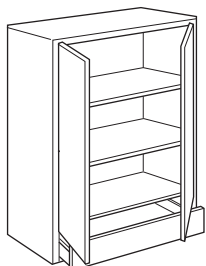
Removable Tray Dividers are available installed in cabinets. The Tray Dividers are Maple/Natural DMR regardless of the color of the interior of the cabinet. Opening heights of 15" to 27" can have installed Tray Dividers. Tray Dividers can be installed in cabinets with reduced depths (9" minimum), but may not be installed in units over 24" deep.

- Tray Dividers will be evenly spaced unless specified otherwise. When special spacing is requested, 6" minimum between dividers is required.
- See chart for maximum number of dividers per face frame opening.
- When TD option is chosen, shelf holes will not be drilled in cabinet. Shelves will not ship with cabinet.
- Not available on Peninsula Cabinets.

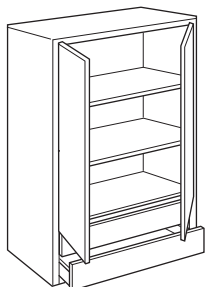
Opening	TD
3	0
6	1
9	1
10½	1
12	2
13½	2
15	2
16½	2
18	3
19½	3
21	3
22½	3
24	4
27	4
30	5
33	5
36	5

Custom Modifications

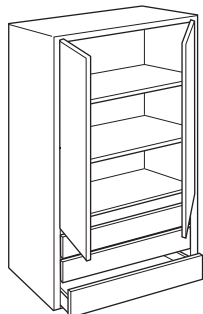
Modifications to Interiors (continued)



ADRW



A2DRW



A3DRW

Add Drawer Below Wall Units

Specify ADRW, A2DRW, or A3DRW

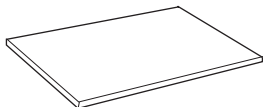
Wall cabinets can have a full width drawer added below the door. This option increases the overall height of the cabinet by 6". (For example, a W3042 with the ADRW option will be 48" high overall). Option limited to standard 4¹/₄" high opening.

- Available in depths of 12", 15", 18", 21", and 24".
- The maximum width of a wall cabinet with an Added Drawer is 48".
- Maximum overall cabinet height is 66".
- Not available on peninsula cabinets or in conjunction with finished bottom.

Also available as A2DRW. When two full width drawers are added, the height increases by 12". The maximum cabinet height is 54" before drawers are added. Maximum overall cabinet height is 66".

Also available as A3DRW. When three full width drawers are added, the height increases by 18". The maximum cabinet height is 48" before drawers are added. Maximum overall cabinet height is 66".

Wood Top Modifications



Wood Tops

Specify WOODTOP

- Specify exposed edges for edging.
- Specify edge profile (#10, #11, #12, #14, #15, #17, #27)
- Specify depth (8" minimum – 48" maximum) and length (8" minimum – 96" maximum).
- Wood Tops are 1¹/₂" thick.
- AB and AEB wood tops available. See page E•26.
- Finishing Techniques available: W, V.

Wood Top Modifications (continued)

Ordering Information

To clip **ONE** corner, please specify:



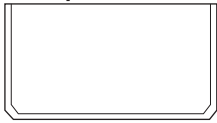
Clip Left WTCLIPL or WTCLIP6L

OR



Clip Right WTCLIPR or WTCLIP6R

To clip **TWO** corners, please specify:



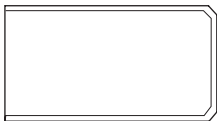
Clip Left and Right WTCLIPL&R or WTCLIP6L&R

OR



Clip Left Sides WTCLIP6LFR&LBK or WTCLIP6LFR&LBK

OR



Clip Right Sides WTCLIP6RFR&RBK or WTCLIP6RFR&RBK

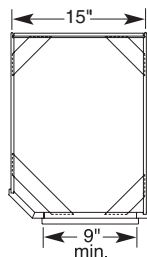
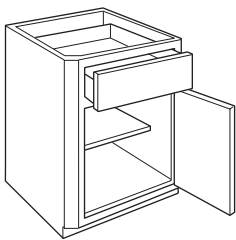
Clipped Corner Wood Tops

Specify WTCLIPL (Wood Top Clipped Corner Left), WTCLIPR (Wood Top Clipped Corner Right), WTCLIPL&R (Wood Top Clipped Corner Left & Right), WTCLIP6LFR&LBK (Wood Top Clipped Corner Left Front & Left Back), WTCLIP6RFR&RBK (Wood Top Clipped Corner Right Front & Right Back), WTCLIP6L (Wood Top Clipped Corner 6" Left), WTCLIP6R (Wood Top Clipped Corner 6" Right), WTCLIP6L&R (Wood Top Clipped Corner 6" Left & Right), WTCLIP6LFR&LBK (Wood Top Clipped Corner 6" Left Front & Left Back), or WTCLIP6RFR&RBK (Wood Top Clipped Corner 6" Right Front & Right Back).

Wood tops may be ordered with up to two corners "clipped" at a 45° angle. The clipped corner on wood tops will match the clipped corners offered as a cabinet frame modification available in a 3" x 3" clip and 6" x 6" clip. When ordering a Clipped Corner Wood Top, all information as listed under wood top section must be specified, as well as the location of the clipped corners (see ordering information). The wood top is limited to a maximum depth of 48" and maximum length of 96", including the length of the clipped corners.

- All available clipped options shown in drawings.

General Cabinet Modifications



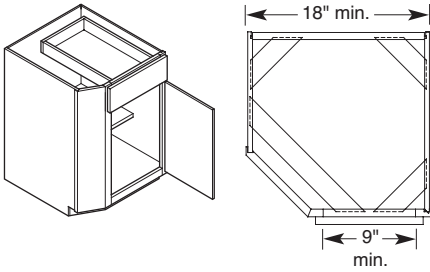
3" Clipped Corners

Specify CLIPL (Clipped Left Corner), CLIPR (Clipped Right Corner), or CLIPL&R (Clipped Left and Right Corners)

Many cabinets can be ordered with either the left, right, or both front corners of the face frame clipped at a 45° angle. The Clipped Corner side end panel is set back 3" by the clip. The size of the face frame opening is reduced by either 3" with one clip, or 6" when both sides are clipped. The overall width of the cabinet does not change.

- The Clipped Corners are available with fluting, but this must be specified.
- Minimum face frame opening is 9" after Clipped Corner option is applied.
- The Face Frame and Door on End modification is not available on the same end as the Clipped Corner.
- Minimum depth of cabinet is 9".
- Extended Stiles and Wide Stiles modifications are not available on the same end as the Clipped Corner.
- When cabinet is clipped to 21" opening, specify one or two doors.
- Not available in combination with 6" clipped corner.
- Some limitations to cabinet offerings due to interior component sizes.

General Cabinet Modifications (continued)

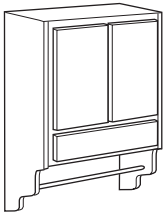


6" Clipped Corners

Specify **CLIP6L** (Clipped Left Corner), **CLIP6R** (Clipped Right Corner), or **CLIP6L&R** (Clipped Left and Right Corners)

Select base cabinets only can be ordered with either the left, right, or both front corners of the face frame clipped at a 45° angle. The clipped corner side end panel is set back 6" by the clip. The size of the face frame opening is reduced by either 6" with one clip or 12" when both sides are clipped. The overall width of the cabinet does not change.

- The Clipped Corners are available with fluting, but this must be specified.
- Minimum face frame opening is 9" after Clipped Corner option is applied.
- The Face Frame and Door on End modification is not available on the same end as the Clipped Corner.
- Minimum depth of cabinet is 18".
- Extended Stiles and Wide Stiles modifications are not available on the same end as the Clipped Corner.
- When cabinet is clipped to 21" opening, specify one or two doors.
- Not available in combination with 3" clipped corners.
- Some limitations to cabinet offerings due to interior component sizes.

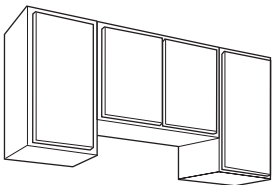
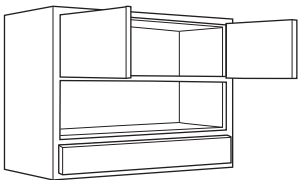


Cover for Organizer/Commode Cabinets

Specify **W/Cover**

Organizer and Commode cabinets can be ordered with a cover. This allows the open area to be concealed.

- Airedale, Braydon Manor, Daladier, Hawthorne, Modesto, Plaza/Verona DFR, Willshire will have a slab front.



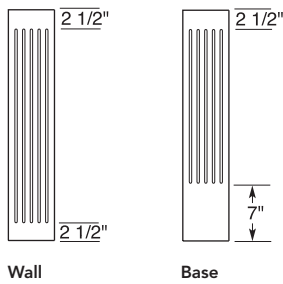
Finished Bottom

Specify **FINBTM**

Wall cabinets can be ordered with a Finished Bottom option, which provides an attractive uniform appearance for the bottom of a run of wall cabinets. Cabinets are prepared with pre-installed spacer blocks.

- The installer must attach the provided $\frac{3}{16}$ " panel to the run of cabinets after installation.
- Order entry will add the correct number of panels required for all depths of Finished Bottom cabinets on the order.
- Additional blocking in field may be required when ordered in conjunction with WBR, VBR-STRT, and VBR-EC options.
- Not available with VBR-ARCH, WBR-ARCH, and ADRW option.
- For use with 12" deep straight cabinet runs, the correct number of FBs (which are $11\frac{1}{4}$ " wide and 96" long) will be added to your order.
- For use with diagonal wall and peninsula diagonal wall units, the correct number of FBDWs (24" x 24") or FBDW27s (27" x 27") will be added to your order. Includes a diagonal cut to match the angle on DW units.
- For use with refrigerator wall units, the correct number of FBRWs ($23\frac{1}{4}$ " wide and 48" long) will be added to your order.

General Cabinet Modifications (continued)

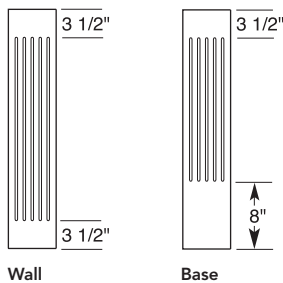


Fluting

Specify **FLUTL** (Fluting Left), **FLUTR** (Fluting Right), **FLUTL&R** (Fluting Left and Right), **FLUT6L** (Fluting 6" Left), **FLUT6R** (Fluting 6" Right), or **FLUT6L&R** (Fluting 6" Left and Right)

Clipped Corners, 3" Extended Stiles, Wide Stiles, and Fillers in widths of 3" and 6" may have the Fluting option added. While Flutes are available in both 3" and 6" widths, the Clipped Corner option is limited to 3" size only.

- Any option that extends the stiles (WBRB, OBRB, WTR, WBR, VTR, and VBR) do not extend the Flute dimensions.
- Base and Tall End panels with 3" return are available with Fluting. Specify Left or Right.
- Specify FLUTE or ROSFLUTE when fluting is required on fillers. On 6" fillers, FLUTE3CTR or ROSFLUTE3CTR can be specified for 3" centered flutes.
- Not available on overlays and overlay fillers.
- Special spacing between flutes not available.
- Special height fluting available, contact customer service.

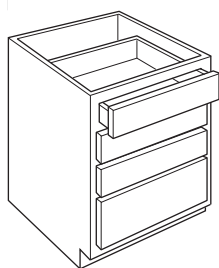
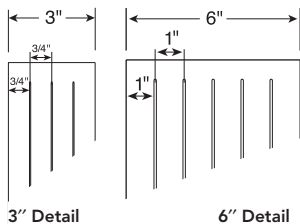


Rose Fluting

Specify **ROSFLUTL** (Rose Flute Left), **ROSFLUTR** (Rose Flute Right), **ROSFLUTL&R** (Rose Flute Left and Right), **ROSFLUT6L** (Rose Flute 6" Left), **ROSFLUT6R** (Rose Flute 6" Right), or **ROSEFLUT6L&R** (Rose Flute 6" Left and Right)

When Rosettes are selected to be used with Fluting, Rosette Fluting (ROSFLUT) must be specified. This option reduces Fluting length 1" on the top and bottom to provide enough space to attach the Rosettes.

- Any option that extends the stiles (WBRB, OBRB, WTR, WBR, VTR, and VBR) do not extend the Rose Flute dimensions.
- Base and Tall End panels with 3" return are available with Rose Fluting. Specify Left or Right.
- Specify FLUTE or ROSFLUTE when fluting is required on fillers. On 6" fillers, FLUTE3CTR or ROSFLUTE3CTR can be specified for 3" centered flutes.
- Not available on overlays and overlay fillers.
- Special spacing between flutes not available.
- Special height fluting available, contact customer service.



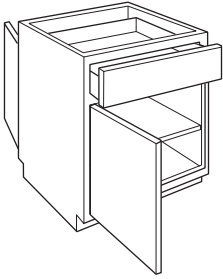
Four Drawer Base

Specify **4DBSTACK**

Vanities with a three drawer stack can be ordered as a four drawer stack.

- Available on VDB, VSHDB, VCSD, VCDB, VDDDB, and VSDBS in all standard heights.

General Cabinet Modifications (continued)

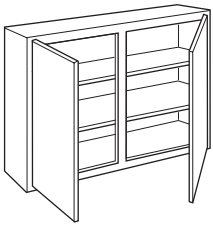


Peninsula Cabinets

Non-standard units by special request; subject to customer service approval.

Most cabinets that are not shown as standard Peninsula cabinets may be modified to be Peninsula.

- Peninsula units over 36" wide are not available in heights over 48".
- 48" wide Peninsula units are not available in heights over 36".
- Peninsula option is not available in conjunction with the Face Frame and Door on End option. Peninsula frame must match front frame for location of any fixed floors, drawers, or pullouts.
- Identify front or peninsula side on modifications.
- 24" high Peninsula wall cabinets can be ordered with Special Height to achieve heights of 12", 15", 18", 21", 27", 30", 36", 42", and 48". For example, to achieve a Peninsula wall cabinet 18" wide and 12" high, specify PW1824 SP-HT12.




Special Depths

For Special Increased Depth, specify SP+DP___ and fill in the total required depth of the unit.

For Special Reduced Depth, specify SP-DP___ and fill in the total required depth of the unit.

Special Depths in 1/4" increments. Some limitations are listed within the listings in this catalog.

- To obtain a look of Increased Depth over 24" on units with drawers or roll trays, the End Extended Back option is available.
- Minimum depth 6", maximum depth 30" on units without drawers or roll trays.
- Minimum depth 12", maximum depth 24" on most units with drawers or roll trays.

 Product has been enhanced!

Decora

General Cabinet Modifications (continued)

Special Heights

For Wall cabinets, specify SP-HT12, SP-HT15, SP-HT18, SP-HT21, SP-HT24, SP-HT27, SP-HT30, SP-HT33, SP-HT36, SP-HT39, SP-HT42, SP-HT45, SP-HT48, or SP-HT54

For Base cabinets, specify SPHT+DRW, SP-HT22.5, SP-HT25.5, SP-HT28.5, SP-HT30, SP-HT31.5, SP-HT36, SP-HT37.5, SP-HT40.5, SP-HT43.5, SP-HT46.5

Select cabinets can be ordered with Special Height. See chart below.

- To achieve desired heights, select the existing cabinet from below and specify SP-HT or SP+HT along with the new height. For example, to achieve a wall cabinet 18" wide and 18" high, specify W1824 SP-HT18.
- Special Height on select Base cabinets can be achieved two ways: SPHT+DRW and SPHT. By adding 4 1/2" drawer opening, SPHT+DRW adds 6" to the top of the cabinet. SPHT will increase or decrease the door opening height to achieve the overall desired cabinet height.

	Wall Cabinets													
	SP-HT12	SP-HT15	SP-HT18	SP-HT21	SP-HT24	SP-HT27	SP-HT30	SP-HT33	SP-HT36	SP-HT39	SP-HT42	SP-HT45	SP-HT48	SP-HT54
Available Height	12"	15"	18"	21"	24"	27"	30"	33"	36"	39"	42"	45"	48"	54"
WTH**15	✓													
DW2424	✓	✓		✓		✓								
DW2724	✓	✓	✓	✓		✓								
PW0924	✓	✓	✓	✓		✓	✓	✓	✓	✓	✓	✓	✓	
PW1224	✓	✓	✓	✓		✓	✓	✓	✓	✓	✓	✓	✓	
PW1524 - PW2124	✓	✓	✓	✓		✓			✓	✓	✓	✓	✓	
PW2424 - PW3624	✓	✓		✓		✓			✓	✓	✓	✓	✓	
PW3924	✓	✓	✓	✓		✓			✓	✓	✓	✓	✓	
PW4224	✓	✓		✓		✓			✓	✓	✓	✓	✓	
PW4524	✓	✓	✓	✓		✓	✓	✓	✓	✓	✓	✓	✓	
PW4824	✓	✓	✓	✓		✓			✓	✓	✓	✓	✓	
PDW2430	✓	✓	✓	✓	✓	✓								
SW**30	✓	✓	✓	✓	✓	✓								
SW3939 - SW4839									✓					
SW2442 - SW3642												✓	✓	
SW3942 - SW4842												✓	✓	
CW2430			✓	✓	✓	✓								
CW2442												✓	✓	
MW3336									✓					
MW333618									✓					
AEW1230	✓	✓	✓	✓	✓	✓								
AEW1242												✓	✓	
AW1230	✓	✓	✓	✓	✓	✓								
AW1242												✓	✓	
OBS**36										✓	✓	✓	✓	
W2142WC										✓	✓	✓	✓	✓
WWR**30									✓	✓	✓	✓	✓	
WNS30			✓	✓	✓	✓								
WNS36									✓					
WNS42												✓	✓	
WSR2130									✓					
WSR2142										✓	✓	✓	✓	
VW**30	✓	✓	✓	✓	✓	✓			✓	✓	✓	✓	✓	
VW1236 - VW3636									✓	✓	✓	✓	✓	✓
WSP**36									✓					
WSP**42										✓				

	Base Cabinets										
	SPHT+DRW	SP-HT22.5	SP-HT25.5	SP-HT28.5	SP-HT30	SP-HT31.5	SP-HT36	SP-HT37.5	SP-HT40.5	SP-HT43.5	SP-HT46.5
Available Height	40.5"	22.5"	25.5"	28.5"	30"	31.5"	36"	37.5"	40.5"	43.5"	46.5"
B09 - B48	✓	✓	✓	✓	✓	✓	✓	✓	✓	✓	✓
B12BB - B48BB	✓	✓	✓	✓	✓	✓	✓	✓	✓	✓	✓
B12RT - B48RT	✓		✓	✓	✓	✓	✓	✓	✓	✓	✓
BF09 - BF48		✓	✓	✓	✓	✓			✓	✓	✓
WB1234.5 - WB4834.5		✓	✓	✓	✓	✓			✓	✓	✓
DB12 - DB42	✓										
DBB30 - DBB42	✓										
3DB12 - 3DB36	✓										
SRB18 - SRB48	✓	✓	✓	✓	✓	✓	✓	✓	✓	✓	✓
SBDT18 - SBDT48	✓	✓	✓	✓	✓	✓	✓	✓	✓	✓	✓
CNTYSB30 - CNTYSB48			✓	✓		✓		✓	✓		
SF18 - SF36	✓	✓	✓	✓	✓	✓	✓	✓	✓	✓	✓
ACSF36 - ACSF42	✓	✓	✓	✓	✓	✓	✓	✓	✓	✓	✓
BC36 - BC48	✓	✓	✓	✓	✓	✓	✓	✓	✓	✓	✓
PBC39 - PBC48	✓	✓	✓	✓	✓	✓	✓	✓	✓	✓	✓
PB09 - PB48	✓	✓	✓	✓	✓	✓	✓	✓	✓	✓	✓
PBF09 - PBF48		✓	✓	✓	✓	✓	✓	✓	✓	✓	✓
CPB27	✓	✓	✓	✓	✓	✓	✓	✓	✓	✓	✓
TB09 - TB18	✓	✓	✓	✓	✓	✓					
ABF12		✓	✓	✓	✓	✓			✓	✓	✓
AEBF24		✓	✓	✓	✓	✓			✓	✓	✓
AEB24	✓	✓	✓	✓	✓	✓		✓	✓	✓	✓
AB24	✓	✓	✓	✓	✓	✓	✓	✓	✓	✓	✓
ABF24		✓	✓	✓	✓	✓			✓	✓	✓
B15PSB - B18PSB	✓	✓	✓	✓	✓	✓	✓	✓	✓	✓	✓
BWB15 - BWB24	✓										✓
BBS18	✓	✓	✓	✓	✓	✓	✓	✓	✓	✓	✓
B2D09-B2D36			✓	✓	✓	✓	✓	✓	✓	✓	✓
B4D24-B2D48			✓	✓	✓	✓	✓	✓	✓	✓	✓
B2D12RT- B2D36RT			✓	✓	✓	✓	✓	✓	✓	✓	✓
B4D24RT- B4D48RT			✓	✓	✓	✓	✓	✓	✓	✓	✓

Custom Modifications

General Cabinet Modifications (continued)

Special Widths

Specify SP-WD9, SP-WD12, SP-WD15, SP-WD18, SP-WD21, SP-WD24, SP-WD27, SP-WD30, SP-WD33, SP+WD33, SP+WD36, SP+WD39, SP+WD42, or SP+WD45

Some cabinets are available with the special width option. See chart below for cabinets with this option along with sizes available.

- To achieve desired widths, select the existing cabinet from below and specify SP+WD or SP-WD along with the new width. For example, to achieve a BFOC36, order a BFOC33 SP+WD36.

	Cabinets												
	SP-WD9	SP-WD12	SP-WD15	SP-WD18	SP-WD21	SP-WD24	SP-WD27	SP-WD30	SP+WD33 SP-WD33	SP+WD36	SP+WD39	SP+WD42	SP+WD45
Available Width	9"	12"	15"	18"	21"	24"	27"	30"	33"	36"	39"	42"	45"
OBS3036								✓					
OBS3636									✓		✓		
PR3015							✓						
PR3615									✓				
MW2730						✓							
MW3630									✓				
MW273018						✓							
MW363018									✓				
MW2733						✓							
MW3633									✓				
MW273318						✓							
MW363318									✓				
MW2736						✓							
MW273618						✓							
MW2739						✓							
MW273918						✓							
MW2742						✓							
MW3042									✓	✓			
MW274218						✓							
MW304218									✓	✓			
MW2745						✓							
MW3045									✓	✓			
MW274518						✓							
MW304518									✓	✓			
MW2748						✓							
MW3048									✓	✓			
MW274818						✓							
MW304818									✓	✓			
QRBE	✓		✓										
WC18		✓											
AD18		✓											
2DB18RT		✓	✓										
2DB24RT					✓								
2DB2428.5					✓								
2DB3628.5											✓		
B36DR									✓		✓		
B36RTDR									✓				

	Cabinets												
	SP-WD9	SP-WD12	SP-WD15	SP-WD18	SP-WD21	SP-WD24	SP-WD27	SP-WD30	SP+WD33 SP-WD33	SP+WD36	SP+WD39	SP+WD42	SP+WD45
Available Width	9"	12"	15"	18"	21"	24"	27"	30"	33"	36"	39"	42"	45"
B36RRTDR									✓				
BMW30RT									✓	✓			
BMW3040.5RT									✓	✓			
BMWD27						✓							
BMWD30									✓	✓			
BFOC33										✓	✓	✓	
2DB36DR									✓		✓		
2DB36RDR									✓		✓		
3DBWD30									✓	✓	✓		
4EDB48NTK						✓		✓		✓	✓	✓	
4EDDB48						✓		✓		✓	✓	✓	
6EDB54NTK										✓			✓
EB12NTK	✓		✓	✓									
EB18	✓	✓	✓	✓	✓	✓							
EOD24	✓	✓	✓	✓	✓	✓							
ESTW1858.5	✓	✓	✓		✓	✓							
EW1236	✓		✓	✓									
ODF18			✓										
OFF18			✓										
OFF24					✓								
OFF30							✓						
OFF36									✓				
OCC15					✓								
OPC24						✓							
WBC2448			✓	✓	✓								
WBC2452.5			✓	✓	✓								
WBC2460			✓	✓	✓								
BLDOC33										✓	✓	✓	
WBCT18**			✓										
WBCB18**			✓										
WBCV18**			✓										
WBCO18**			✓										

General Cabinet Modifications (continued)

Special Widths - 1/4" Increments

Specify SP+WD___.___.__.

Modification is restricted to starting with the smaller standard cabinet width and then increasing the width.

For example, to achieve a Wall Cabinet 13 1/4" wide by 12" high, order a W1212 SP+WD13.25.

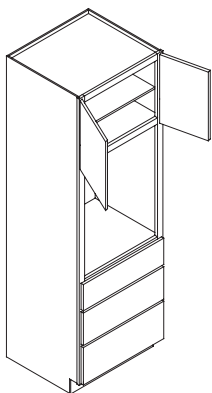
Many cabinets are available with the Special Widths 1/4" Increments modification. See chart below for included cabinets and width availabilities.

- Not available in conjunction with some modifications including: Clipped Corners, Split Doors, Mullion Doors, Wide Stiles, Split Drawers, and Valance Top Rail – English Country.
- The following configurations will apply to cabinets with doors and/or drawers:
 - 9" - 23 3/4" – 1 door
 - 24 1/4" - 38 3/4" – 2 door, 1 drawer
 - 39 1/4" - 47 3/4" – 2 door, 2 drawer
- Special Widths not available on Simsbury door styles.

	Description	Cabinet Widths	
		Minimum Width	Maximum Width
W-12	Wall 12" high	9"	48"
W-15	Wall 15" high	9"	48"
W-18	Wall 18" high	9"	48"
W-21	Wall 21" high	9"	48"
W-24	Wall 24" high	9"	48"
W-27	Wall 27" high	9"	48"
W-30	Wall 30" high	9"	48"
W-33	Wall 33" high	9"	48"
W-36	Wall 36" high	9"	48"
W-39	Wall 39" high	9"	48"
W-42	Wall 42" high	9"	48"
W-45	Wall 45" high	9"	48"
W-48	Wall 48" high	9"	48"
B	Base	9"	48"
BF	Base Full	9"	48"
B-RT	Base with Roll Tray	12"	48"
DB	4 Drawer Base	12"	42"
3DB	3 Drawer Base	12"	42"
SRB	Sink Range Base	18"	48"
CNTYSB	Country Sink Base	30"	48"
PB	Peninsula Base	9"	48"
PBF	Peninsula Base Full	9"	48"
PW	Peninsula Wall	9"	48"
UW	Utility Wall	12"	36"
UB	Utility Base	12"	36"
UB-RT	Utility Base with Roll Trays	15"	36"
OCM	Microwave Cabinet	27"	39"
OCSM	Microwave & Single Oven Cabinet	27"	39"
OCSD	Single Oven Cabinet with Drawers	27"	39"
OCS	Single Oven Cabinet	27"	39"
OCD	Double Oven Cabinet	27"	39"
VB	Vanity	12"	48"
VBF	Vanity Base Full	12"	48"
VS	Vanity Sink Base	18"	48"
VDB	Vanity Drawer Base	12"	36"
UV	Vanity Utility	15"	24"
WBC	Wall Bookcase	15"	39"
WBCT	Wall Bookcase Tall	15"	36"
WBCB	Wall Bookcase Base Full Height Doors	15"	36"
WBCV	Wall Bookcase Vanity Full Height Doors	15"	36"
WBCO	Wall Bookcase Office Full Height Doors	15"	36"

Custom Modifications

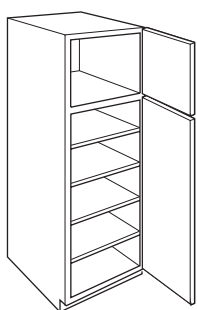
General Cabinet Modifications (continued)



Three Drawer Base Stack

Specify 3DBSTACK

Single oven cabinets with drawers (OCSD) can be ordered with a Three Drawer Base Stack.



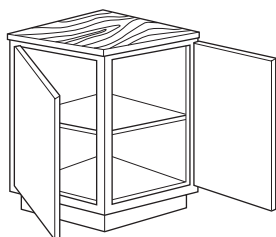
Utility Reduced Heights

Specify SPHT-3

Special request; subject to customer service approval.

Most 84" utility cabinets can be reduced in height by 3". The minimum height available is 81". When SPHT-3 option is selected, the top section is reduced by 3".

- Modification available on all tall and oven cabinets.
- Units not available with Utility Reduced Heights: UVD and UBI.

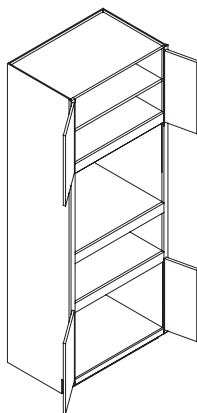


Wood Tops for Angled End Base Cabinets

Specify WOODTOP

Angled End Base Cabinets can be ordered with a dimensioned Wood Top.

- Available on all AB, ABF, AEB, and AEBF cabinets.
- Not available on ABF12.



Warming Drawer

Specify WMDRW

Most oven and microwave cabinets can be ordered with a Warming Drawer cut out. See page J•16 for ordering instructions.

Recommendations for Fully Accessible/Barrier-Free Design

Many Decorá modifications may be utilized to increase cabinet accessibility and convenience for the elderly, the physically challenged, and other individuals with special needs.

For your reference when designing for wheelchair access, the most commonly accepted industry standard for toekick space is between 8" and 9" high with a 6" set-back. This may be achieved with Decorá cabinetry by ordering an 8½" high, 6" deep toe space; contact customer service for pricing.

The most commonly accepted height for tables and work surfaces is 30" to 33". Ordering 32½" high Decorá base and vanity base cabinets achieves this standard; call customer service for details.

The addition of roll trays in cabinet interiors is recommended. Utilize the Installed Roll Trays option listed in this "Modifications" section.

The use of easily-gripped cabinet handles and/or knobs is recommended. Choose from several selections in the "Hardware" section of the Decorá Product and Price Catalog.

The following information from the U.S. Government Publication American National Standards and other sources may also be helpful:

Wheelchair dimensions: length – 42"; open width – 25"; collapsed width – 11"; seat to floor – 19½"; armrest to floor – 29".

Wheelchair access: Minimum turn space for 360° turn – 60"; minimum turn space for 180° turn – 36"; side reach limits – 9" to 54"; safest ramp slope – 1:12; table height – 30" to 33".

